

# Vision

The successful inclusion of newcomers into all aspects of the community, embracing everyone's contribution and ensuring well-being for all.

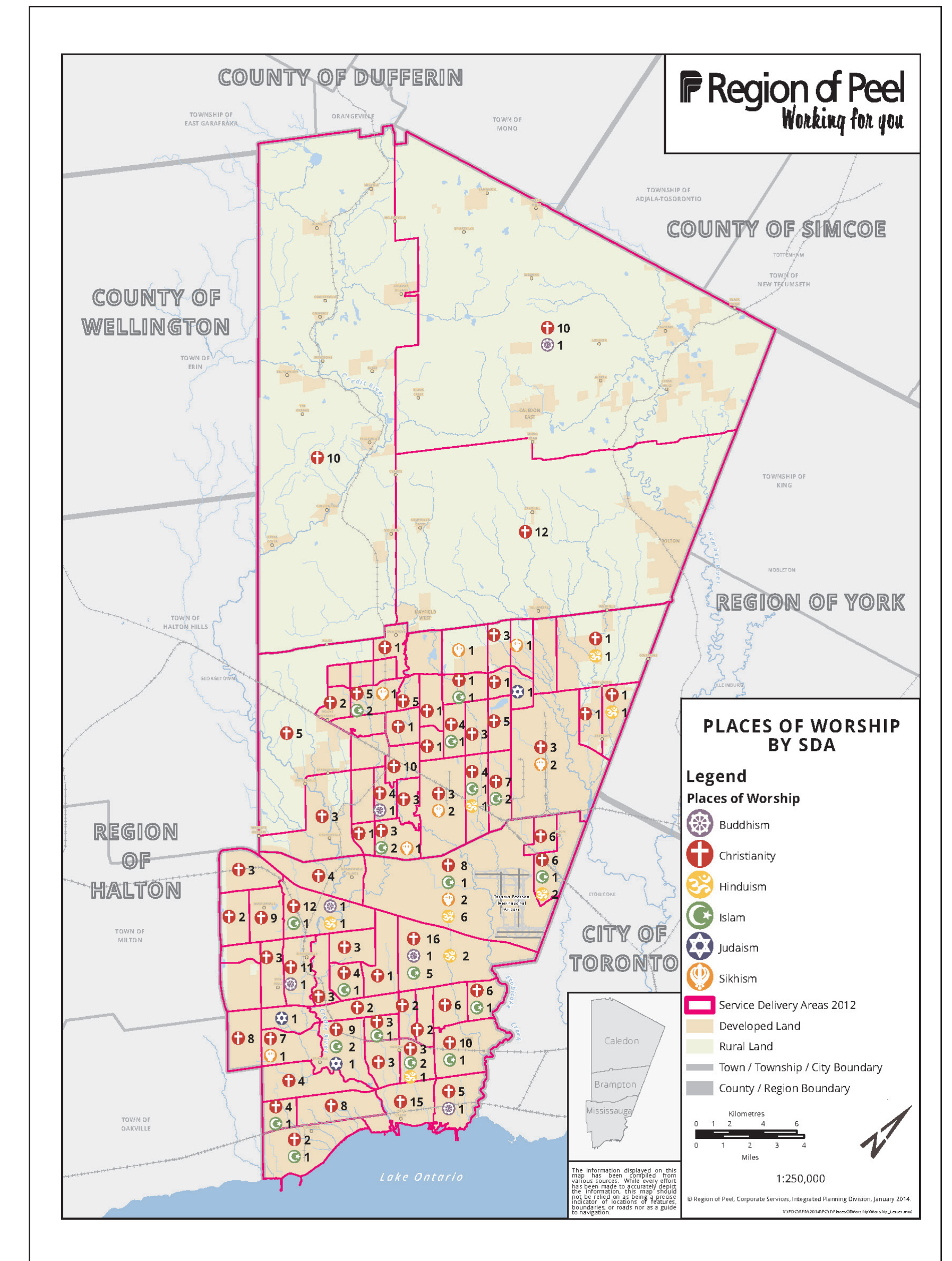
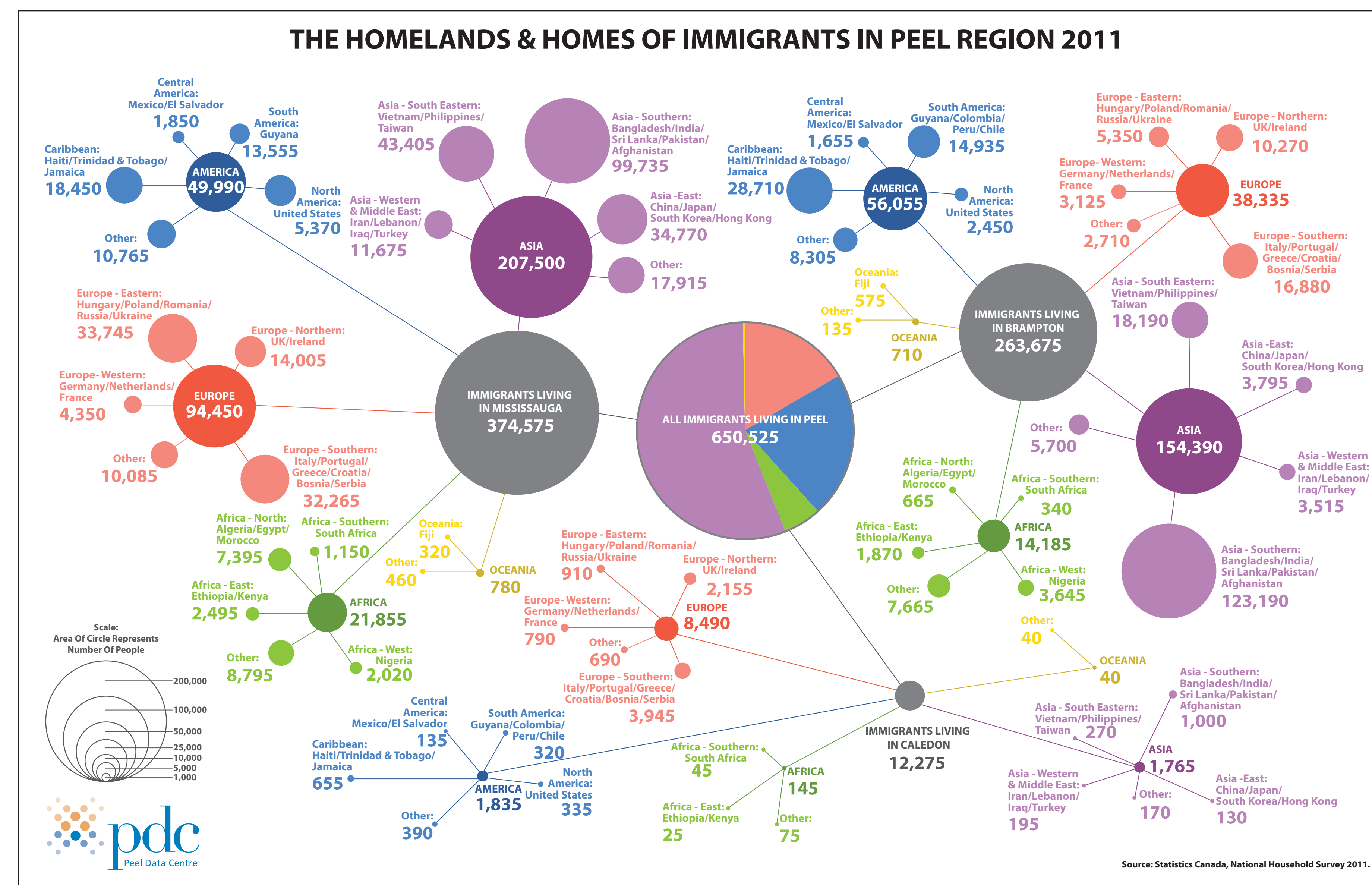
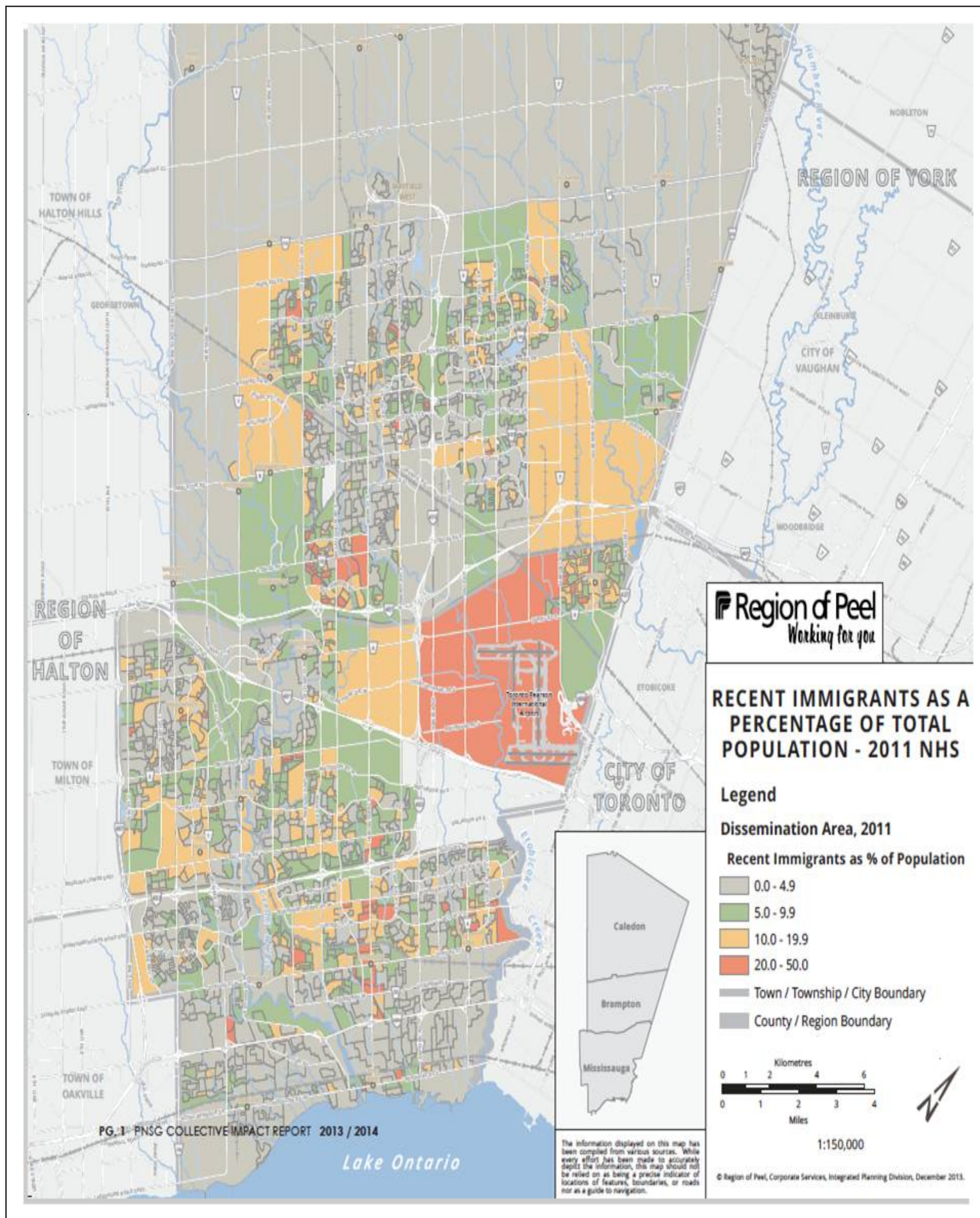


# Function

Champion >> Integrate >> Lead >> Research >> Plan

# Mission

PNSG will champion a coordinated and collaborative strategy for the successful engagement of newcomers in the economy and community of Peel.



310,410



151,825



Of the 310,410 immigrants from India in Ontario, 151,825 (48.9%) live in Peel

1.4  
MILLION

THERE ARE MORE THAN 1.4 MILLION PEOPLE IN PEEL AS OF JUNE 2014.

87%

Of Peel's population identified a religious affiliation, the highest percentage in the GTA.

>> Collective Impact are imbedded in PNSG's work:

1. **Common vision** - Peel 'Community Plan'.
2. **Shared measurement** - indicators
3. **Mutually reinforce activities** - CPT and working groups
4. **Continuous communication** - collective impact report, community partnerships, communication
5. **Backbone support** - staff expertise, commitment and skills to serve the entire initiative and coordinate participating organizations and agencies to be engaged, involved and excited about the work we do.



Leverage LIP knowledge and expertise >>

LIPs have unique insight into the impact of changes on various stakeholders and are well positioned to take a leadership role in supporting policy and program changes as they are implemented.

>> support LIPs in this area by ensuring LIPs are represented and have input on the CIC National Working Group.

Help build the evidence base >>

Look to shared indicators and common data to scale up our understanding of newcomer's experiences and settlement efforts to an inter-Regional level.

>> support this work through the provision of Region-specific CIC data, and assisting the purchase of other relevant data through Statistics Canada, MCIIT, MEDTE, and other sources.

Facilitate collaboration between LIPs >>

The structure and mandate of the LIPs are well-suited for partnership and integration.

>> facilitate this collaboration through increased opportunities for peer learning among LIP's, and pilot projects to explore collaborative working groups, governance models and evaluation.

Use and enhance local data >>

LIPs are the backbone that can tie data supports and pieces together so to inform planning and services

>> facilitate this work through ensuring the LIP mandate has research and partnerships at the centre of its purpose

# Collective Impact

>> Collective Impact the commitment of a group of actors from different sectors to a common agenda for solving a complex social problem and a shift from the social sector's current paradigm of "isolated impact." No single organization can create large-scale, lasting social change alone.

Mark Kramer, John Kania  
Stanford Social Innovation Review, Winter 2011

DID YOU  
KNOW ?

> 66.4% OF BRAMPTON'S POPULATION IS MADE UP OF VISIBLE MINORITIES  
> THE TOP HOME LANGUAGES IN PEEL ARE PUNJABI IN BRAMPTON, URDU IN MISSISSAUGA, AND ITALIAN IN CALEDON

At 50.5%,  
Peel has the  
highest  
proportion of  
immigrants  
in the  
GTA