



Local Immigration Partnerships: A Collaborative Community Approach

**Victoria Esses
Welcoming Communities Initiative**

Overview

- What is a Local Immigration Partnership (LIP)?
- What are the challenges that LIPs are intended to address?
- Background on the development of the LIP Program
- Steps in the LIP process and key components of an effective community plan
- Case study: London and Middlesex LIP
- What are the opportunities that the LIPs present?

What is a Local Immigration Partnership?

- A collaborative community initiative to promote the settlement and integration of immigrants
- Builds on a community's strengths and promotes strong linkages between sectors
- Starts with existing resources and relationships
- Coordinates and engages services and communities
- Actively engages a range of stakeholders, including mainstream institutions, to encourage a locally-driven strategic planning process



- A means to systematize local engagement in settlement and integration, with resources available to hire individuals to coordinate the activities of the LIP
- Structural rather than task specific: can serve a variety of goals through a collaborative approach involving local stakeholders

What are the Challenges that Local Immigration Partnerships are Meant to Address?

Need to strengthen local capacity to provide services to and integrate newcomers, and to achieve improved outcomes as indicated by enhanced economic, social, political, and civic participation

- Building communities of practice to share information and promising practices
- Providing a framework to facilitate collaboration and develop community-based strategic plans
- Bringing together federal, provincial, and municipal players to address common issues

- Contributing to the enhanced planning envisioned in the Modernized Approach to Settlement
- Supporting better coordination of services across multiple sectors and with mainstream organizations
- Engaging local leaders and encouraging additional actors to be involved in the planning process
- Incorporating and integrating settlement, integration and diversity planning into municipal plans
- Increasing engagement of host population in the service of promoting the two-way street of integration
- Facilitating new funding from new sources



Evolution of Municipal and Community Involvement in Development of Federal Government Policy

- Increasing recognition of the importance of engagement at the local level
 - Municipalities play a central role in delivering many services that impact the settlement and integration experiences of newcomers
 - Tremendous capacity and expertise exist at the local level
 - Economic benefits of immigration are most evident in the local context

- Municipalities and communities are playing a greater role in planning for and guiding immigration and settlement
 - Attraction: Newcomers can play a critical role in addressing emerging labour market needs
 - Retention: Entire families need to feel welcomed for workers to stay

2008/2010 LIP Call for Proposals in Ontario: Objectives

- Strengthen local and regional awareness and capacity to integrate immigrants
- Help communities put immigration on their overall planning agenda in order for communities to benefit from the successful social and economic integration of immigrants
- Strengthen the role of local and regional communities in serving and integrating immigrants
- Secure access to a broader range of services for newcomers

- Improve the manner in which mainstream service providers address newcomer needs
- Improve the coordination of mainstream and settlement services, including language training, health, education, and labour market integration programs
- Improve access to the labour market for immigrants
- Promote the attraction and retention of newcomers in communities that are in need of population renewal

Outcome of these Calls for Proposals

- Greater than anticipated uptake, and formation of robust partnerships
- Standing Committee on Citizenship and Immigration Report on Best Practices in Settlement Services identified LIPs as a best practice (March 2010)
- Minister Jason Kenney has stated that “LIPs are the future of settlement services” (October 2010)
- Plans for expansion of LIP program

45 LIPs throughout Ontario



15 LIPs in Toronto
(including Toronto-wide LIP) and 30 community-wide LIPs in the rest of Ontario

Steps in the LIPs Process



1. Establish a partnership council

2. Create terms of reference for the partnership council

3. Conduct research and establish a local strategy to be implemented over three years

4. Develop an annual action plan to address local priorities

5. Implementation and execution of the action plan annually

6. Assess progress and measure outcomes

Planning Units

- Central Council
- Sub-Councils / Sector Tables / Working Groups focused on particular themes: e.g.,
 - Employment
 - Health
 - Education
 - Settlement
 - Inclusion and Civic Engagement



Key Components of an Effective Community Plan

- Community Context: demographics, needs assessment, asset mapping
- Vision for the Community
- Community Priorities – Strategic Directions
- Action Plan for Implementing the Directions: activities, partners, funders
- Strategy for Monitoring and Evaluation
- Communication Strategy





Case Study:

London & Middlesex

Local Immigration Partnership (LMLIP)

- LMLIP is a collaborative community initiative to serve & integrate immigrants
- Co-chaired by the City of London and United Way of London & Middlesex



LMLIP CONNECTION TO THE CITY'S STRATEGIC PRIORITIES

- Economic Prosperity
- Community Vitality
- Creative, Diverse and Innovative City

LMLIP Goals

- Improved access to services
- Coordinated provision of services
- Improved labor market outcomes for immigrants
- Strengthened strategic capacity of municipality on immigration issues
- Increased community capacity to respond to emerging needs
- Increased community awareness of immigrant integration needs

**LMLIP – A Community
Collaborative Initiative
Partnering with:**

- Welcoming Cultural Diversity Committee
- London Middlesex Immigrant Employment Council
- Child and Youth Network
- London' Strengthening Neighbourhood Strategy
- Networking for an Inclusive Community
- Welcoming Communities Initiative



Engage and Collaborate - Advisory Committee

- Expression of Interest seeking enthusiastic individuals to serve on the Advisory Committee for LMLIP
- Close to 20 agencies/organizations participated on the Advisory Committee
- Developed Draft Terms of Reference for the upcoming LMLIP Council

A Culture of Community Engagement - Community Consultation (86 participants)

Goals:

- Gain an understanding of the purposes and objectives of the London and Middlesex Local Immigration Partnership
- Have a sound understanding of the Draft Council Terms of Reference
- Provide input into the Terms of Reference
- Collectively endorse the Terms of Reference

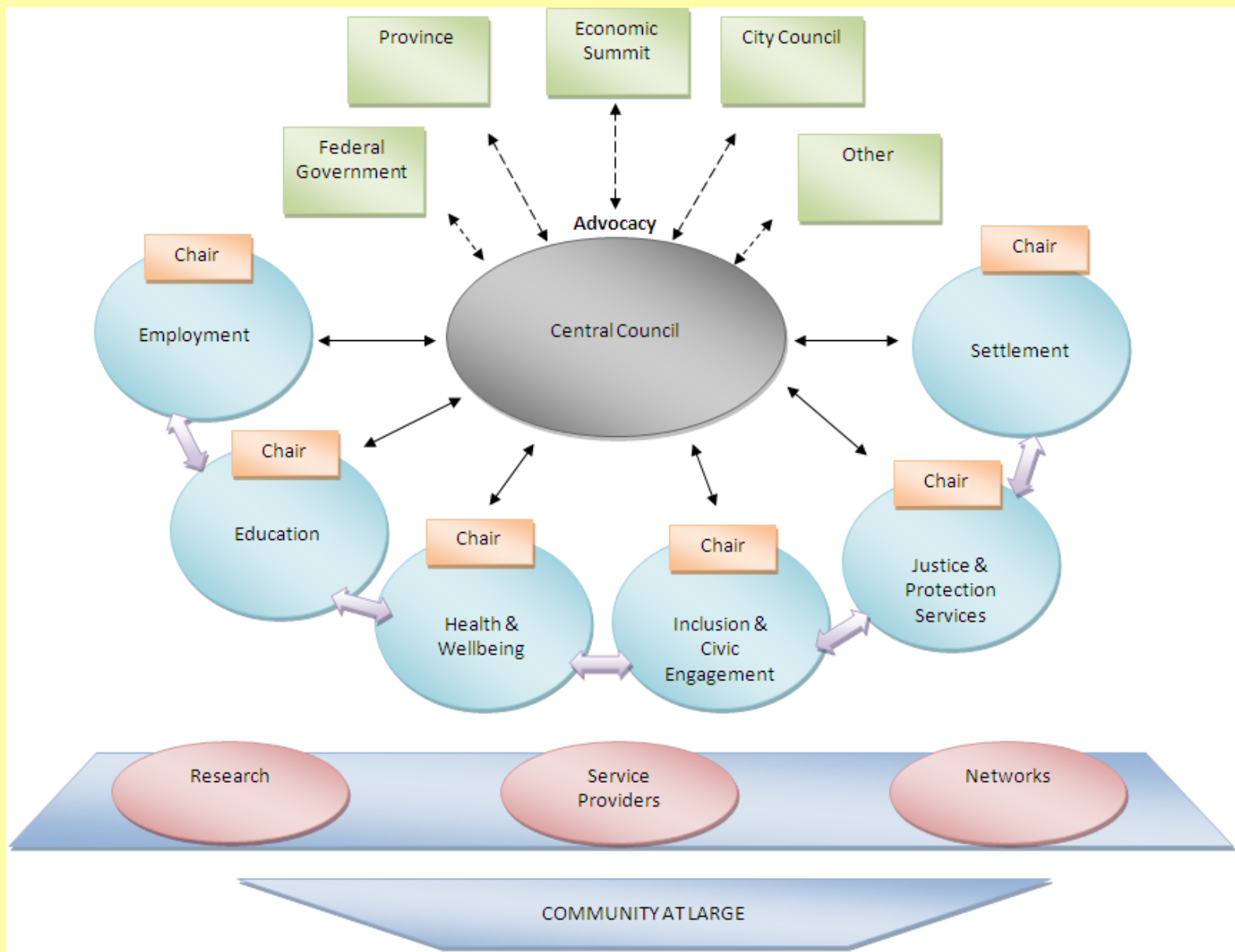
LMLIP Council Recruitment

- The Expression of Interest for establishment of Council was circulated broadly
- Translated into French, Spanish and Arabic
- Ads placed in ethno-specific media and traditional media
- Generated an overwhelming response of 117 applicants to serve on the LMLIP Central Council and the six Sub-councils

Community Consultation (143 participants)

Community convened to:

- Discuss the draft Community Capacity & Needs Inventory prepared by the WCI and priorities for strategic plan
- Form the London & Middlesex Local Immigration Partnership Council & Sub-Councils



LMLIP Structure

Collaborative Systems Approach

- LMLIP is changing the landscape of how we work as organizations & systems
- Sub-Councils with active involvement by over 200 members are developing innovative & collaborative approaches
- Total of 500 people actively involved in overall process (2 additional community consultations have taken place)
- Active involvement with immigrant system partners e.g., WCI & Municipal Immigration Committee

Opportunities the LIPs Present

- Engage all levels of government in a partnership to achieve more comprehensive planning on immigration and settlement
- Improve focus: Stakeholders and partners work toward common goals
- Broaden responsibility and accountability for achieving collective outcomes
- Induce municipalities and communities to play a larger role in planning for and guiding immigration and settlement
- Utilize the tremendous amount of tacit knowledge and expertise available at the local level to enhance planning and to arrive at solutions attuned to local needs and capacities

- Expand the breadth of stakeholders: all levels of government, settlement agencies, universal service providers, ethnocultural organizations, faith-based organizations, local associations, school boards, hospitals, police services, seniors services, language instruction providers, child and family services, employment networks, health associations, legal services, universities and colleges, newcomers...
- Improve community consultation and buy-in: Involvement of immigrants and members of the host community in identifying needs, gaps, and strengths of the community, as well as possible solutions
- Facilitate the sharing of knowledge and information



For Further Information:
www.welcomingcommunities.ca