

# PHASE 4 IMPACTSREPORT

April 2014–March 2016



**The Chatham-Kent Local Immigration Partnership (CK LIP)** brings together community stakeholders to develop and support the implementation of local settlement strategies. Members of CK LIP form a Partnership Council, which provides a collaborative framework to develop coordinated, comprehensive and strategic approaches toward immigration and integration that fits the needs of Chatham-Kent's immigrants/newcomers, employers, and service providers.

Though often used interchangeably, immigrants are defined as any individual born in another country who resides in Canada while newcomers are defined as any individual born in another country who has moved to Canada within the last five years and currently resides in Canada. Local Immigration Partnerships typify the two-way street approach to integration, which regards all immigrants/newcomers and members of the host community to be equal and important agents of change.

## VISION

CK LIP will foster a welcoming community by working together to integrate newcomers and celebrate diversity in Chatham-Kent.

## PURPOSE

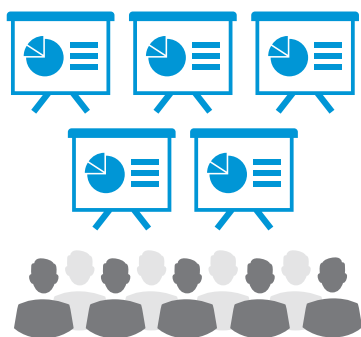
To create a community collaborative of traditional and non-traditional stakeholders, to strengthen Chatham-Kent's capacity to welcome newcomers and improve integration outcomes related to economic, social, and civic participation.

## OBJECTIVES

- ✓ Improve the integration of newcomers by increasing awareness of and access to available resources and services
- ✓ Improve awareness of the social and economic benefits of newcomers to the Chatham-Kent community
- ✓ Pursue sustainability options for the CK LIP by identifying collaborative partnerships and funding opportunities
- ✓ Increase awareness of CK LIP initiatives

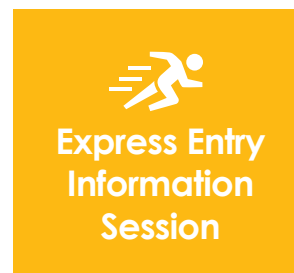


# ACTIVITIES

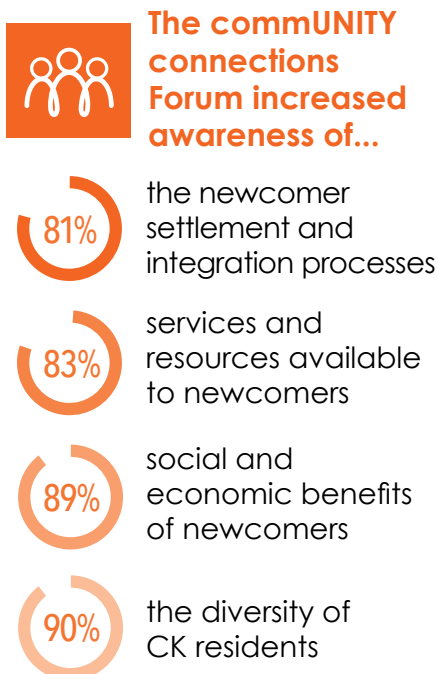


- ✓ **5 presentations** delivered to community organizations which engaged over **300 people**

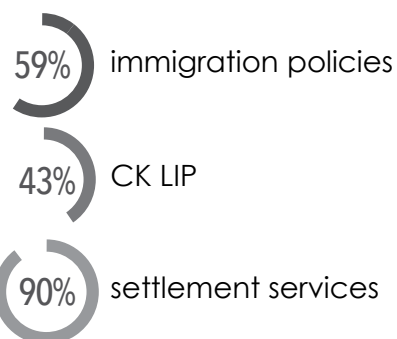
- ✓ Held or helped organize **6 events** with over **250 people** engaged.



- ✓ **5 information booths** at outreach events engaged over **250 people**



**These four events increased awareness of...**

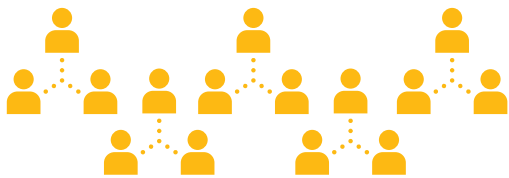


- ✓ Conducted a **Newcomer Health Study** which engaged **51 newcomers/immigrants** and **29 staff** from **11 service provider organizations** about newcomer health literacy and healthcare access in Chatham-Kent





- ✓ Launched the **Chatham-Kent Welcome Network** to promote cultural awareness and sensitivity of local organizations, and help link newcomers/immigrants to settlement information



15 members added



120 decals distributed



1 membership ceremony held



[www.chatham-kent.ca/CKIPWelcomeNetwork](http://www.chatham-kent.ca/CKIPWelcomeNetwork)



- ✓ Raised awareness of newcomer contributions by showing **"Get the Whole Picture"** videos at Cineplex theatres for 6 weeks and shared stories on Newcomer's Portal



- ✓ Published background report on **"Exploring the Impacts of Regulatory Change on Temporary Foreign Workers in Chatham-Kent"**





# AWARENESS/ENGAGEMENT



 **239** likes

 **234** followers



Published **12+ media articles**  
covering CK LIP activities

Engaged **37 Partnership  
Council member  
organizations**



**10** working groups

**27%** **increase** in CK LIP  
membership since 2014

**57%** **more engagement**  
of CK LIP members in 2015

**18** CK LIP member organizations  
**improved** diversity awareness  
and cultural competency



**Fannie Vavoulis** | *Medical Recruiter & Education Coordinator*  
**Chatham-Kent Health Alliance**

"I love the opportunity to host newcomers to Chatham-Kent. Being part of CK LIP allows me to learn more about what is available in CK so I can pass this information along during my recruitment process. It has allowed me to expand my network and provide resources to others."



**Gail Bishop** | *President & CEO*  
**Chatham-Kent Chamber of Commerce**

"The Chatham-Kent Chamber of Commerce embraces diversity and welcomes the creative entrepreneurial spirit newcomers bring to enhancing our community. Supporting strategies of the CK Local Immigration Partnership in nurturing new representation of Chatham-Kent is essential to growth of the newcomer and to municipal prosperity."



**Donna Fraleigh** | *Public Health Nurse*  
**Municipality of Chatham-Kent**

"Chatham-Kent Public Health is a participant on CKLIP because the development of partnerships and collaborative endeavours between health service providers and community agencies/groups that represent or work closely with specific newcomer and ethno-cultural communities will lead to more comprehensive and responsive Public Health programs and services."



**Bonny Pigeon** | *Supervisor, Employment & Social Services*  
**Municipality of Chatham-Kent**

"While settling in a new community can be exciting, it also brings many challenges. It is rewarding to work with a group of like-minded individuals who are working together to make the transition easier for Newcomers by looking at ways to create awareness and improve access to community resources and service providers."



**Audrey Ansell**, *Acting Manager, Community Attraction and Promotion*  
**Municipality of Chatham-Kent**

"Chatham-Kent's rich fabric is woven with ethnic and cultural diversity; that's why people choose to live here."



**Council Members  
 think that CK LIP is  
 either effective or  
 very effective at:**

- 93%** forming partnerships and collaboration
- 100%** discussing relevant issues  
 (related to newcomers/immigration)
- 100%** sharing information/resources
- 100%** networking
- 77%** community impact





CHATHAM-KENT  
LOCAL IMMIGRATION  
PARTNERSHIP

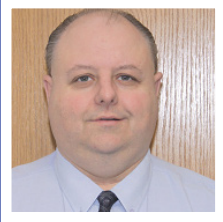
[www.chatham-kent.ca/cklip](http://www.chatham-kent.ca/cklip)





**Marie Carter** | *Migrant Worker Specialist*  
**Migrant Worker Ministry of the Diocese of London**

"The diverse service network we've tapped into through the CK LIP has been essential for the development of services we could never hope to provide alone [...] In turn, I believe, our involvement on the board has made it possible for others to better connect with workers and to learn about service gaps."



**Dan Chauvin** | *Manager, Continuing Education*  
**St. Clair College**

"St. Clair College increasingly attracts students from many places in the world. Being an active member of the Chatham-Kent Local Immigration Partnership enables us to forge connections for our students with both the newcomer and immigrant communities. It is through these experiences that true learning happens."



**Tracy Callaghan** | *Executive Director*  
**Adult Language and Learning**

"I value the opportunity to work in collaboration with community partners, develop new and effective responses to the changing needs of newcomers in Chatham-Kent, and promote a welcoming community for future growth and development."



**SarahMay Garcia** | *Lead*  
**Health System Design**

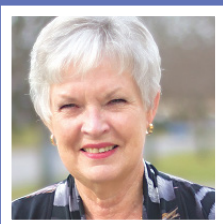
**Marthe Dumont** | *French Language Services Coordinator*  
**Erie St. Clair Local Health Integration Network**

"The Erie St. Clair Local Health Integration Network collaborates with the LIPs in the Erie St. Clair region toward the common goal of improving the patient experience for newcomer/immigrants who access the Canadian health care system. This partnership is one example of how the LIP creates a welcoming community that considers all settlement needs for new residents- in this case considering unique health needs in order to coordinate and enhance health programs that are culturally safe and equally accessible."



**Kristy Jacobs**, *Project Co-Ordinator*  
**Chatham-Kent Workforce Planning Board**

"The Chatham-Kent Workforce Planning Board is pleased to be a part of the CK LIP. Newcomers bring with them a wealth of varied experience and expertise which is instrumental in growing and developing the workforce here in Chatham-Kent!"



**Karen Kirkwood-Whyte**, *CEO*  
**United Way of Chatham-Kent**

"It is an honour to work with diverse groups of people – people who contribute viewpoints that help us create innovative solutions to social issues and build stronger, safer, more caring communities. The more diverse our community, the more opportunities for growth and prosperity."



# CK LIP PARTNERSHIP COUNCIL

## SECTOR REPRESENTATIVES

Adult Language and Learning  
Chatham-Kent Chamber of Commerce  
Chatham-Kent Community Health Centres  
Chatham-Kent Employment and Social Services  
Chatham-Kent Health Alliance, Physician Recruitment  
Chatham-Kent Non-profit Network  
Chatham-Kent Police Services, Community Mobilization Section  
Chatham-Kent Prosperity Roundtable  
Chatham-Kent Public Health  
Chatham-Kent Public Library  
Chatham-Kent Small Business Centre  
Chatham-Kent Workforce Planning Board  
College Boreal  
Conseil Scolaire Catholique Providence  
Diocese of London, Migrant Workers Ministry  
Dresden Raceway and Slots  
Goodwill Career Centre  
Greater Essex County District School Board  
Lambton-Kent District School Board  
Mennonite Central Committee  
Municipality of Chatham-Kent, Community Attraction and Promotion Division  
Place Concorde Centre Communautaire Francophone  
South Essex Community Council  
St. Clair College, Thames Campus  
St. Clair College Employment Centre  
United Way of Chatham-Kent  
University of Guelph, Ridgetown Campus  
Windsor Women Working with Immigrant Women  
Workplace Safety and Prevention Services  
Youth Engagement Partnership  
YMCA of Chatham-Kent



## RESOURCE MEMBERS

Immigration, Refugees, and Citizenship Canada  
Erie St. Clair Local Health Integration Network  
Ontario Ministry of Citizenship & Immigration  
Ontario Ministry of Agriculture & Food  
Ontario Ministry of Training, Colleges & Universities  
Service Canada

Funded by:

Financé par :



Immigration, Refugees  
and Citizenship Canada

Immigration, Réfugiés  
et Citoyenneté Canada

## Chatham-Kent Local Immigration Partnership

425 McNaughton Avenue West, Chatham, ON, N7M 5K8  
519.354.0430  
cklip@chatham-kent.ca

[www.chatham-kent.ca/cklip](http://www.chatham-kent.ca/cklip)



@CK\_LIP



<https://www.facebook.com/CK.ON.LIP>