

e future lives here

# CITY OF SURREY: Arrival of 1,000 New Residents

P2P Conference, December 2, 2016



SURREY  
LOCAL IMMIGRATION  
PARTNERSHIP

Funded by:

Financé par :

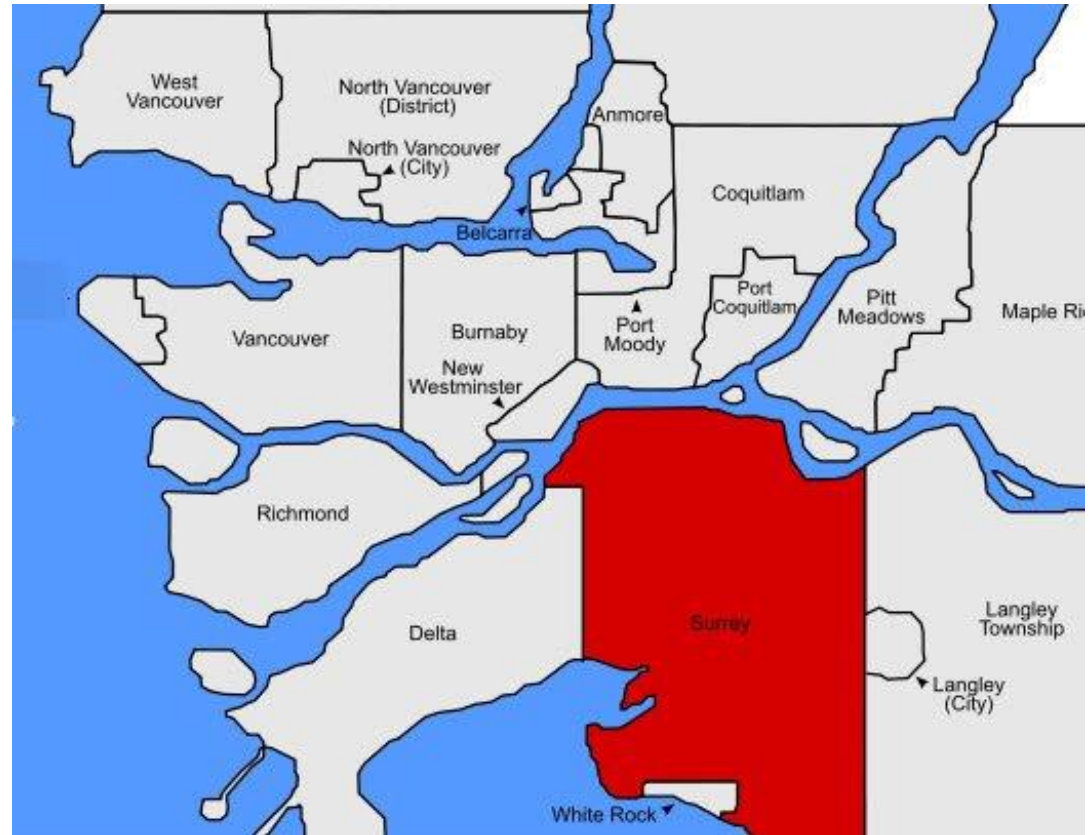


Citizenship and  
Immigration Canada

Citoyenneté et  
Immigration Canada

# SURREY, BRITISH COLUMBIA

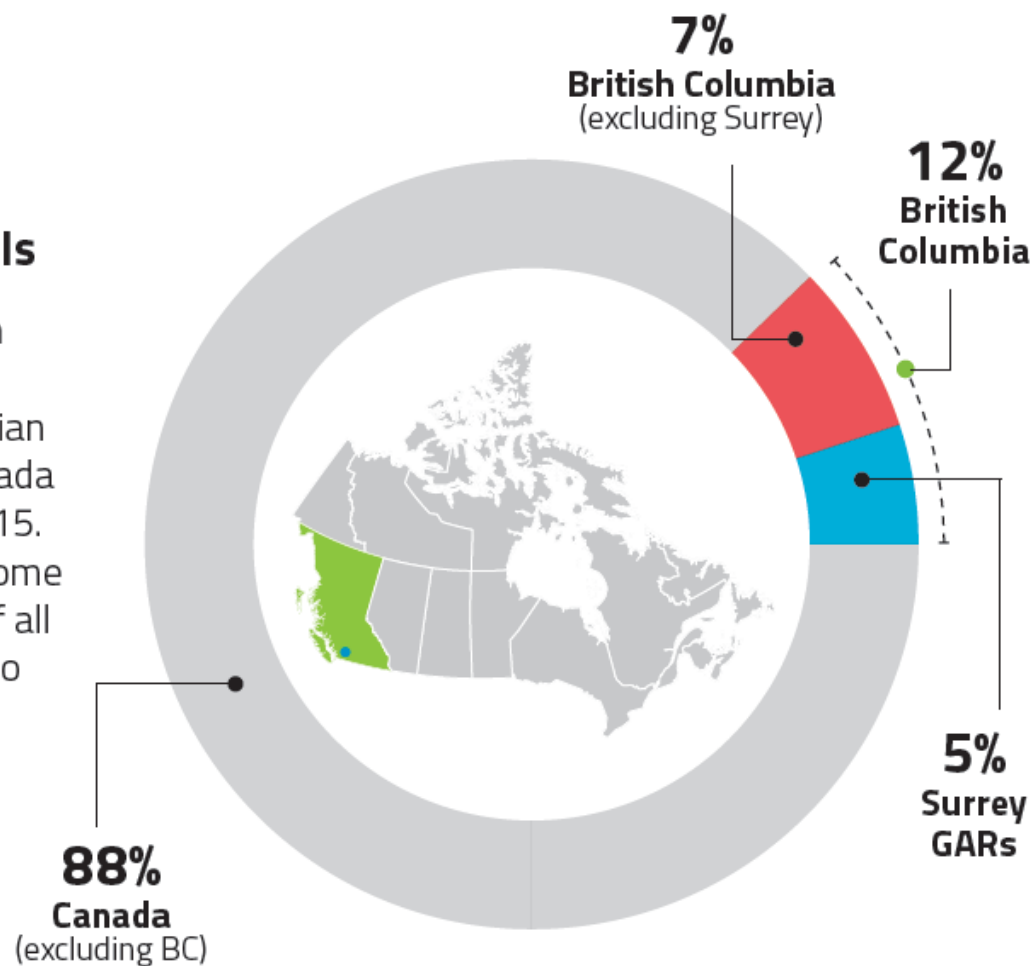
- 515,000 people
- Unique geography
- 1,000 new residents each month



# 2016

## Syrian GARs in Surrey as a % of Syrian GAR Arrivals

The Province of British Columbia has received **12%** of the **17,437** Syrian GARs resettled to Canada since November 4, 2015. The City of Surrey is home to approximately **5%** of all of the Syrian GARs who arrived in Canada.



SURREY  
LOCAL IMMIGRATION  
PARTNERSHIP



# TYPES OF ACTIVITIES

1. Public Education/Engagement
2. Welcoming Syrians
3. Staff Education & Engagement
4. Public Awareness Campaign: We Are Surrey
5. Policy: Refugee Strategy
6. Advocacy:  
Transportation Loan





# INTER-DEPARTMENTAL GROUP

## DEC 2015

- Social Planning
- Parks & Recreation
- Library
- Arts & Culture
- HR
- RCMP - City staff
- Engineering



SURREY  
LOCAL IMMIGRATION  
PARTNERSHIP



# ONLINE INFORMATION CITY WEBSITE

# SURREY LIP WEBSITE

## Do you want to help?

Would you like to help as a volunteer? Do you have employment leads for newcomers? Would you like to make a donation? [Fill out the Surrey LIP Help pledge form.](#)

Finding adequate and affordable housing for Syrian refugee families is one of the most challenging tasks for ISSofBC, an organization responsible for initial settlement services to Government Assisted Refugees in BC. Can you help? [Fill out ISSofBC Accommodation form.](#)

There are six immigrant serving agencies in Surrey which are funded by the Government of Canada to provide settlement services to refugees. Below is the list of these organizations. They need your help in providing services and supports to refugees.

### DIVERSEcity Community Resources Society

- [Visit Our Website](#)
- [Donate to support the needs of refugees we serve](#)
- Learn more about our settlement programs offered to refugees in Surrey: Contact Person: Tahzeem Kassam, Chief Operating Officer at 604-547-1274 or email at [tkassam@dcrs.ca](mailto:tkassam@dcrs.ca)

### Options Community Resources

- [Visit Our Website](#)
- [Donate to support settlement services for refugees](#)
- [Learn more about our settlement programs offered to refugees in Surrey: Contact Person: Connie Hong.](#)

[Contacts](#)

## Key Information

[How You Can Help brochure](#) 📄

[Surrey Local Immigration Partnership](#) 📄

[Our Community, Our Voice Report on Refugee Settlement and Integration](#) 📄

[Welcome To Surrey brochure in English and Arabic](#) 📄

[ISSofBC Refugee Readiness Hub](#) 📄

## Refugee Crisis

Globally, one in every 120 humans is now either a refugee, displaced person or seeking asylum, showing the highest ever recorded worldwide displacement (UNHCR, 2016). Since 2011, the civil war in Syria has become one of the main drivers of this phenomenon.

In the last five years, Surrey has become a home to the largest number of refugees in British Columbia.

In this period of time, over 25% of all Government Assisted Refugees (GARs) in B.C. have settled in Surrey and since November 2015, over 44% of all Syrian GARs who came to B.C. have found a home in Surrey.

## Join Surrey in Helping Refugees

- **Sign the petition** to advocate the end of the federal government's [transportation loan program for refugees](#)
- **Connect refugees to the City of Surrey's [Leisure Access Program](#)**, if you are a service provider.
- **Help find housing in Surrey.** [ISSofBC](#) 📄 is the agency responsible for



SURREY  
LOCAL IMMIGRATION  
PARTNERSHIP



Public Forum - Jan 2016



## Surrey Town Centres مراكز الأحياء في مدينة سري

City of Surrey is divided into six town centres. Each of these Town Centres has a variety of recreational facilities.

يوجد ستة أحياء في مدينة سري. توجد مجموعة متنوعة من المرافق الترفيهية في جميع أحياء المدينة.

**CLOVERDALE**  
Cloverdale Recreation Centre 604-598-7960  
Don Christian Rec Centre 604-502-6400  
Clayton Community Hall 604-502-6400  
Cloverdale Arena 604-502-6410  
Cloverdale Library 604-598-7320  
Cloverdale Mini Rec Centre 604-502-6400  
Surrey Archives 604-502-6409  
Surrey Museum 604-592-6936

**FLEETWOOD**  
Fleetwood Community Centre 604-501-5030  
Surrey Sport & Leisure Complex 604-501-5950  
Fleetwood Library 604-598-7340

**GUILDFORD**  
Fraser Heights Recreation Centre 604-592-6920  
Guildford Recreation Centre/Pool 604-502-6360  
Guildford Library 604-598-7360  
Port Kells Library 604-598-7440

**NEWTON**  
Newton Recreation Centre/Pool 604-501-5540  
Newton Arena 604-501-5040  
Newton Seniors' Centre 604-501-5010  
Newton Library 604-598-7400  
Strawberry Hill Library 604-501-5836

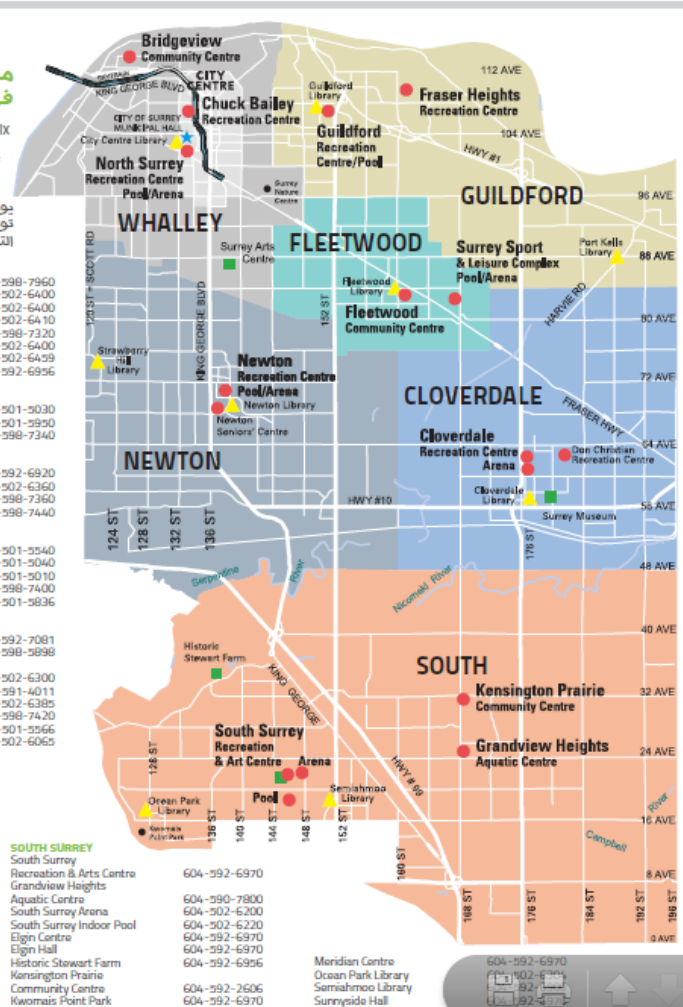
**NORTH SURREY**  
Bridgeview Community Centre 604-592-7081  
Chuck Bailey Recreation Centre 604-598-5898  
North Surrey Recreation Centre/Pool 604-502-6300  
City of Surrey Municipal Hall 604-591-4011  
Bear Creek Pavilion 604-502-6385  
City Centre Library 604-598-7420  
Surrey Arts Centre 604-501-5566  
Surrey Nature Centre 604-502-6065

### LEGEND معاليم

- Arts and Heritage  
فنون و تراث
- City Hall  
مبنى البلدية
- Library  
مكتبة
- Recreation Centre  
مرافق ترفيهية

**SOUTH SURREY**  
South Surrey Recreation & Arts Centre 604-592-6970  
Grandview Heights Aquatic Centre 604-590-7800  
South Surrey Arena 604-502-6200  
South Surrey Indoor Pool 604-502-6220  
Elgin Centre 604-592-6970  
Elgin Hall 604-592-6970  
Historic Stewart Farm Community Centre 604-592-6966  
Kwomais Point Park 604-592-2606  
604-592-6970

Meridian Centre 604-592-6970  
Ocean Park Library 604-592-6970  
Surrey Library 604-592-6970



Surrey has a population of approximately 500,000 people. It is the second largest city in British Columbia.

يبلغ عدد سكانها حوالي 500,000 نسمة. وهي ثاني أكبر مدينة في مقاطعة كولومبيا البريطانية.

Over 40% of Surrey residents were born outside of Canada.  
أكثر من 40% من سكان سري ولدوا خارج كندا.

Surrey is located on the traditional territory of five First Nations – Katzie, Kwantlen, Semiahmoo, Tsawwassen, and Kwikwetlem and Qayqayt.

تقع مدينة سري على أراضي السكان الأصليين من شعوب وقبائل كاتزي، كوانتلن، سميامو، تواسن وكويكتلم.

The City of Surrey has an elected Mayor and 8 Council members. Local government elections happen every 4 years.

تقع مدينة سري على أراضي السكان الأصليين من شعوب وقبائل كاتزي، كوانتلن، سميامو، تواسن، وكويكتلم و فيفتين.

## About This Pamphlet عن هذا المنشور

This pamphlet was created by the City of Surrey and Surrey Local Immigration Partnership to welcome Syrian newcomers who are settling in Surrey in 2016. The pamphlet is available in English and Arabic. This is the second version of this pamphlet.

تم إنشاء هذا الكتيب من قبل بلدية سري و شراكة الهجرة المحلية في مدينة سري لاستقبال القادمين السوريين الذين سيستقرون في سري عام 2016. الكتيب متوفر باللغتين العربية والإنجليزية. وهذه هي الطبعة الثانية من هذا المنشور.

## About Surrey Local Immigration Partnership معلومات عن شراكة الهجرة المحلية في سري

Established in 2014, Surrey LIP is led by the City of Surrey and governed by a committee drawn from 30 community organizations.

عن شراكة الهجرة المحلية في سري تم انشائها في عام 2014. ترأسها البلدية وتضم مجلس مكون من 30 منظمة مجتمعية.



## Welcome To Surrey مرحبا بكم في سري

The artwork titled, What We Can't Do Alone, We Can Achieve Together is in the atrium at Surrey City Hall  
الآلة تسمى "ما لا نستطيع تحقيقه بمفرده، يمكننا تحقيقه معاً" متواجدة في صالة المدينة في سري



**SURREY LOCAL IMMIGRATION PARTNERSHIP**

Funded by: Citizenship and Immigration Canada  
Financed par: Citoyenneté et Immigration Canada



**Staff Training - April - May 2016**





SURREY  
LOCAL IMMIGRATION  
PARTNERSHIP

[What is Surrey LIP?](#)

[Facts & Resources](#)

[LIP Strategy & Projects](#)

[In the News](#)



## Newton Library Staff Food Drive For Refugees

WEDNESDAY, AUGUST 31, 2016

As a part of the City of Surrey efforts to welcome refugees in the community, City's staff are volunteering and leading food and donation drives to refugees in Surrey. In July 2016 Newton Library staff led a food drive for the Muslim Food Bank. The staff collected money and food donations enough to support four families in need. Boxes of food were donated to the Muslim Food Bank which serves a large number of refugee families in the region.



SURREY  
LOCAL IMMIGRATION  
PARTNERSHIP

# Staff Donation drives - Jun-Sept 2016





**Supporting 10 highly vulnerable  
refugee families**



**\$3,000 - raised by staff through  
Employee Appreciation Gift  
program donated towards the City  
fund to improve refugee access of  
public transit**

**Staff Donation drives - Jun-Sept 2016**





Welcoming Event - Jul 2016



WHO DO YOU THINK WE ARE?

# WE ARE AMBITIOUS

**RANIA**  
BUSY DENTIST  
SYRIAN FROM ABU DHABI  
MARRIED WITH 2 KIDS  
LOVES HIKING  
BRYAN ADAMS' FAN



**Wafa**  
BUSINESS OWNER  
HOCKEY MOM OF 3 DAUGHTERS  
CAME FROM IRAQ 4 YEARS AGO  
OUTDOORS ENTHUSIAST  
MEMBER OF THE CITY'S SOCIAL POLICY ADVISORY COMMITTEE

# WE ARE SURREY

CURIOUS? LEARN MORE ABOUT WHO WE ARE AT [WWW.SURREYLIP.CA](http://WWW.SURREYLIP.CA)

 THECITYOFSURREY
  CITYOFSURREY
  #WEARESURREY
 



WHO DO YOU THINK WE ARE?

# WE ARE INSPIRED

**ZHAN-ZHAN**  
BORN IN CHINA  
AWESOME 13-YEAR-OLD  
DOES COMPUTER PROGRAMMING FOR FUN  
RECEIVED A COMMUNITY GRANT  
ORGANIZED SUMMER BASKETBALL FOR COMMUNITY KIDS



**Ebraheh**  
PALESTINI SYRIAN REFUGEE  
LEFT SYRIA ON OWN A  
WANTS TO GIVE B. TO CAN.  
RECEIVED COMMUNITY GR.  
FORMED A PEER GR. FOR ARABIC YOI IN SUR

# WE ARE SURREY

CURIOUS? LEARN MORE ABOUT WHO WE ARE AT [WWW.SURREYLIP.CA](http://WWW.SURREYLIP.CA)

 THECITYOFSURREY
  CITYOFSURREY
  #WEARESURREY
 



WHO DO YOU THINK WE ARE?

# WE ARE RESILIENT

**AHMED**  
SOMALIAN REFUGEE  
FUN DAD  
MASTER SMOOTHIE MAKER  
PLAYS SOCCER  
VOLUNTEERS WITH SOMALI YOUTH ASSOCIATION OF B.C.



**Candace**  
REFUGEE FROM MYANMAR  
SCHOOL SETTLEMENT WORKER  
LOVES TIM HORTONS' ICED CARPS  
PHOTOGRAPHY BUFF  
CHAIR OF KAREN CULTURAL SOCIETY OF B.C.

# WE ARE SURREY

CURIOUS? LEARN MORE ABOUT WHO WE ARE AT [WWW.SURREYLIP.CA](http://WWW.SURREYLIP.CA)

 THECITYOFSURREY
  CITYOFSURREY
  #WEARESURREY
 

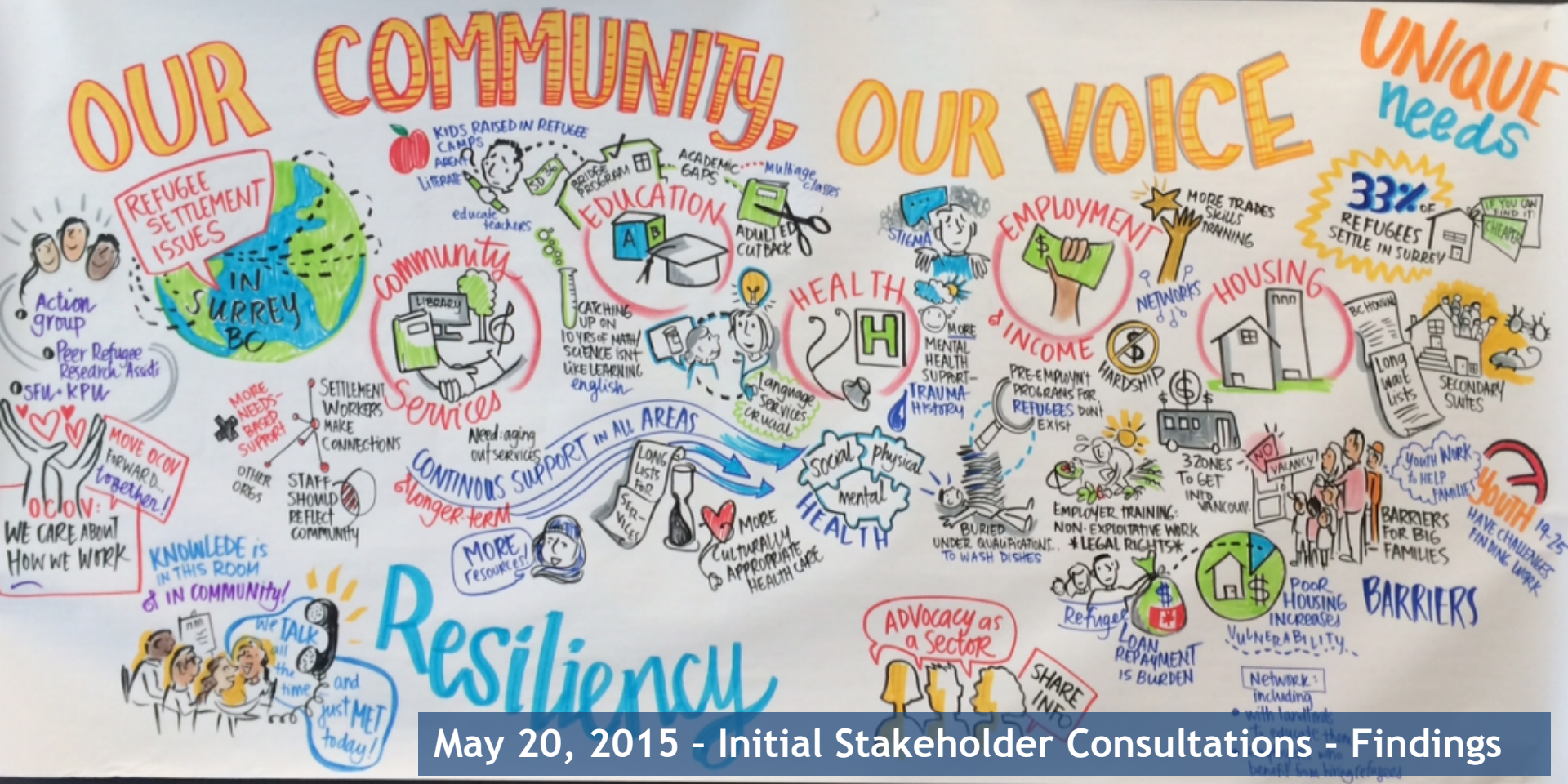


# Engagement: Public Campaign



# POLICY: 2015- 2016

## DEVELOPING 3-YEAR REFUGEE STRATEGY



May 20, 2015 - Initial Stakeholder Consultations - Findings

# THE CITY: ADVOCATE

- **2009:** a Resolution to the Union of BC Municipalities
- **2014:** The City has initiated a petition to cancel outstanding GAR transportation loan debt
- **2016:** Standing Committee on Citizenship & Immigration



- **Councillor Villeneuve**
- **2008:** Cancel Refugee Transportation Loan



# LEARNINGS

- Leadership
  - Councillor Villeneuve
  - City Manager
- Surrey LIP
  - Housing within the City
  - Funding





**THANK YOU!**  
**[www.SurreyLIP.ca](http://www.SurreyLIP.ca)**

**Olga Shcherbyna, Surrey LIP Coordinator**  
**[oshcherbyna@surrey.ca](mailto:oshcherbyna@surrey.ca)**



**SURREY  
LOCAL IMMIGRATION  
PARTNERSHIP**

# CHALLENGES

- No decision making power
- Challenges in allocating resources
- Little engagement with senior levels of government



SURREY  
LOCAL IMMIGRATION  
PARTNERSHIP

# SURREY LIP & ITS IMPACT

- The City Role
- Better informed staff
- Community Capacity



SURREY  
LOCAL IMMIGRATION  
PARTNERSHIP





# KEY LEARNINGS

- Senior Leadership
- Communication Materials
- City staff position
- Challenges: Leader vs. Convener roles



# IMMIGRANTS & SURREY

- 41% are immigrants
- 1 in 5 speaks Punjabi

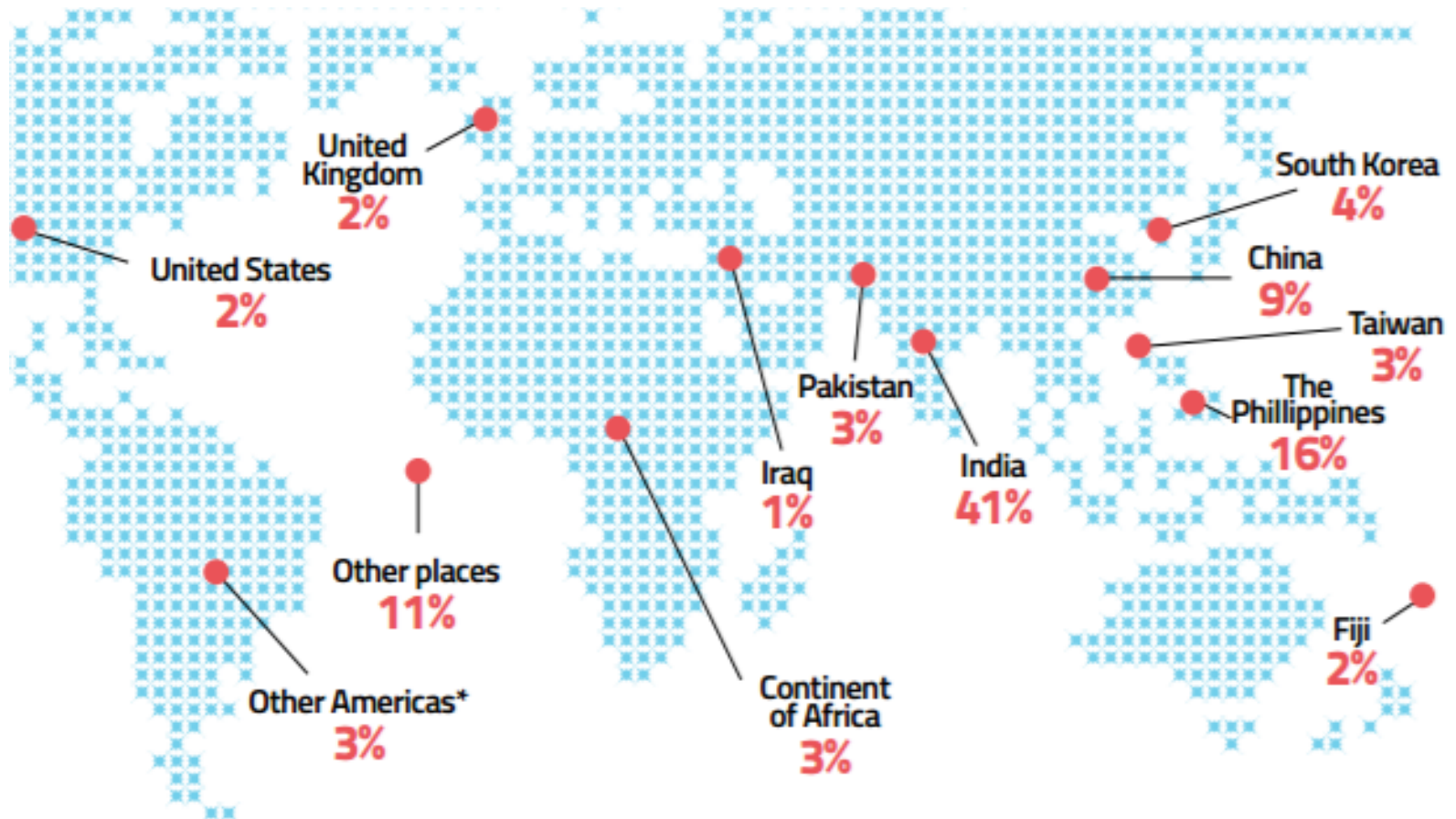


*Vaisakhi celebration.  
Surrey 2012*

Photo source: Flickr.  
Credits to [waferboard](#)

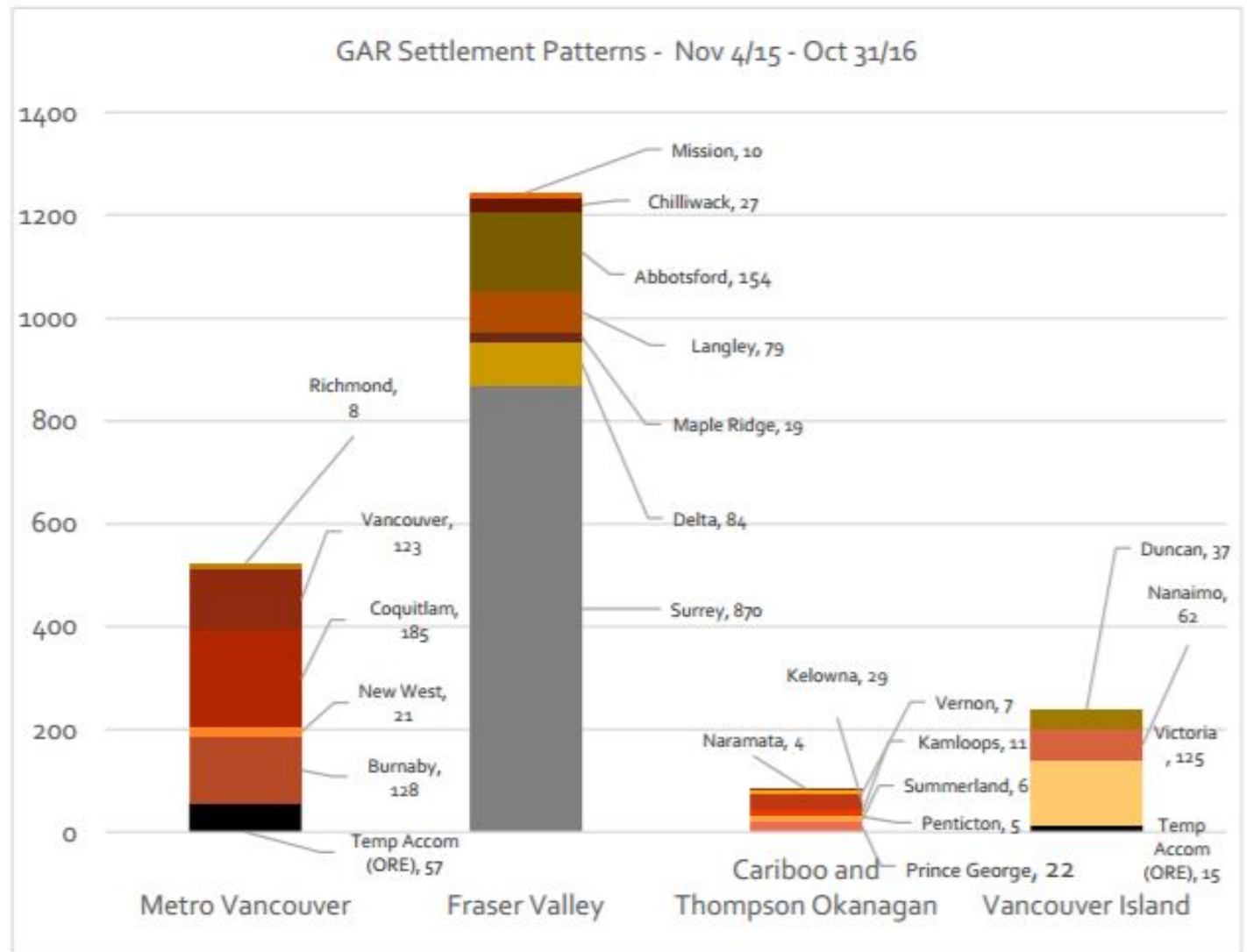


# IMMIGRANTS BY COUNTRY OF ORIGIN



SURREY  
LOCAL IMMIGRATION  
PARTNERSHIP

# 2016



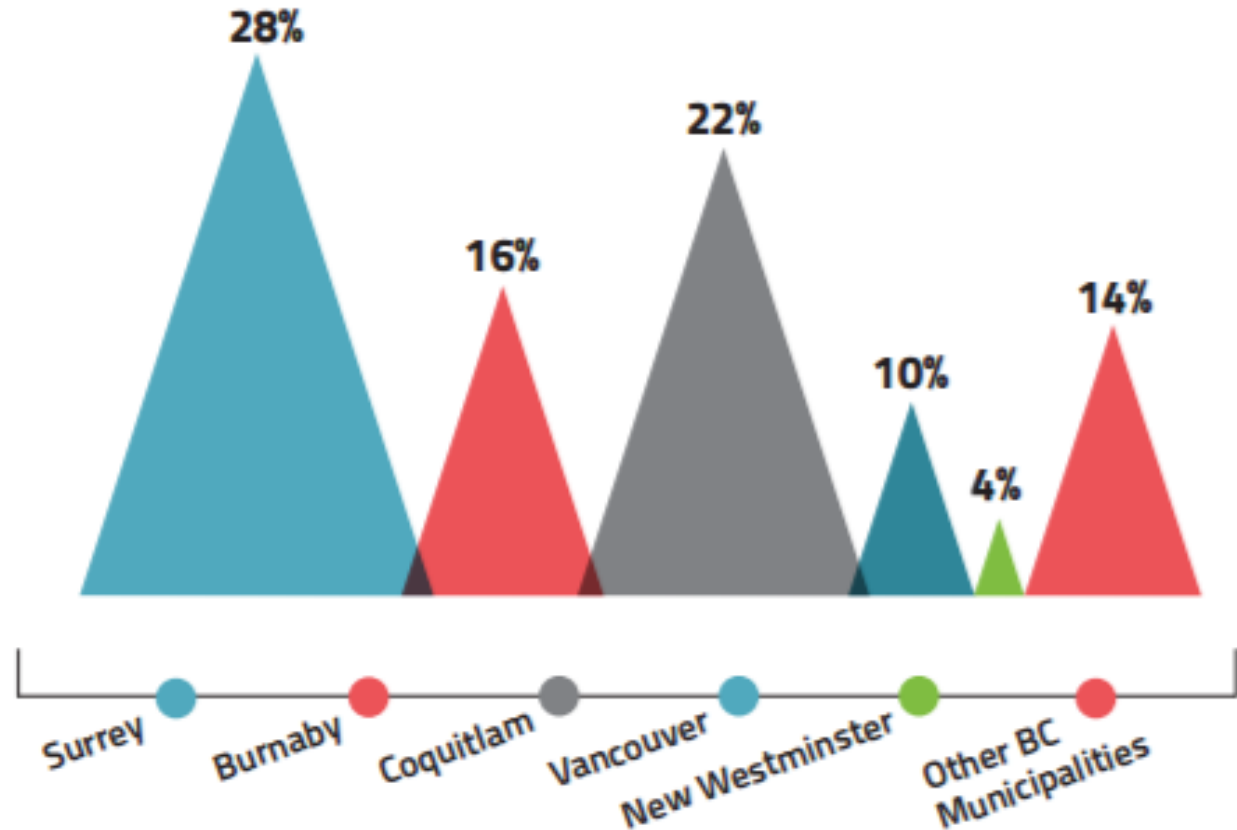
SURREY  
LOCAL IMMIGRATION  
PARTNERSHIP



In  
previous  
years ...

## Government Assisted Refugees destined to B.C. by municipality, 2010 to 2013

Source: ISSofBC



Note: 6% are reported as Outside B.C.



SURREY  
LOCAL IMMIGRATION  
PARTNERSHIP