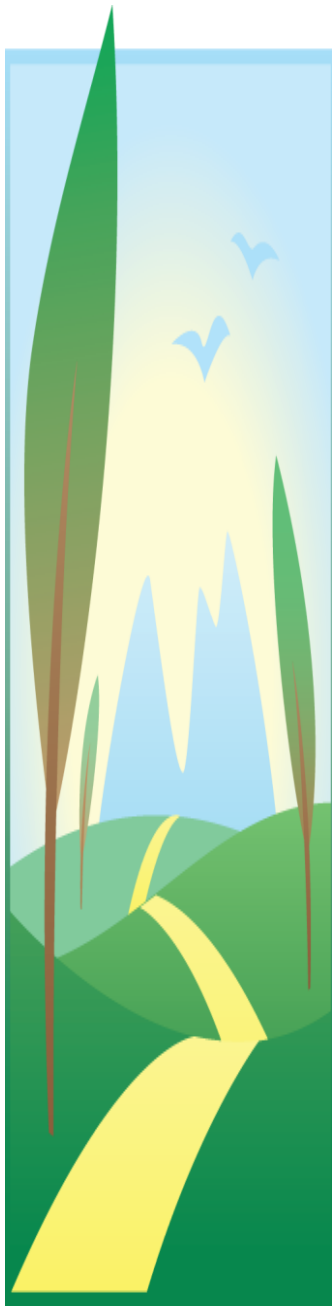


Les Sentiers DU Leadership

Voies vers la prospérité

Pré-conférence

15 novembre 2017

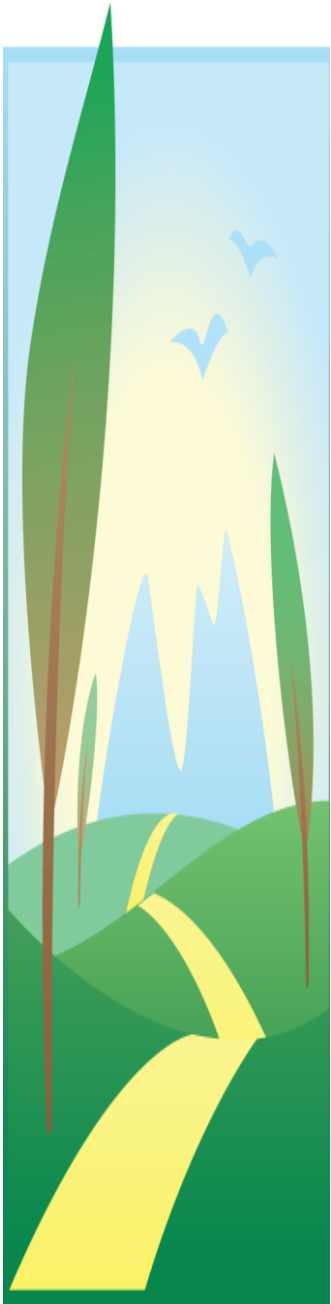


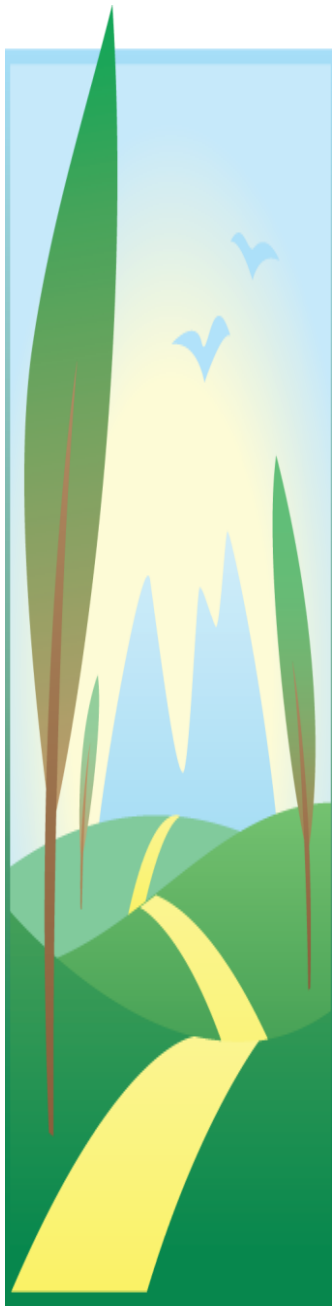
RIF et PLI : quelques constats sur la redevabilité, le partage des données d'évaluation et l'Impact collectif

RIFs and LIPs: Some Thoughts on Accountability, Shared Measurement and Collective Impact

État de développement des RIF

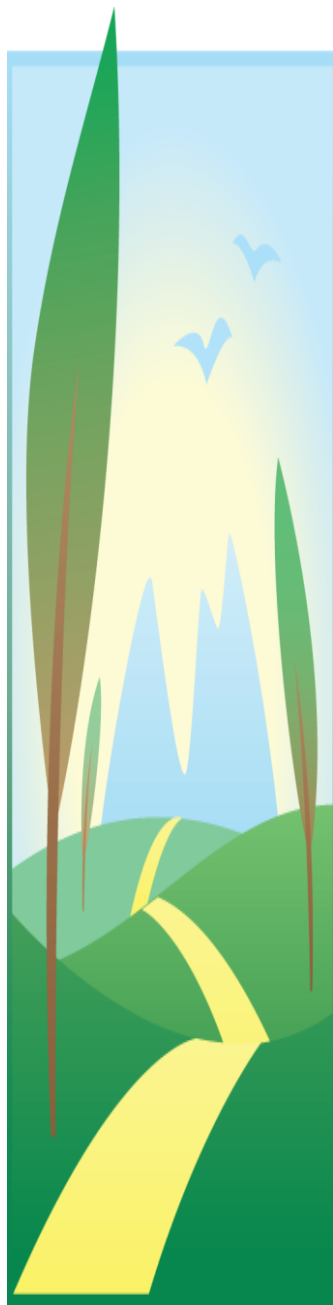
- Les plateformes de concertation sont à divers niveaux de développement et suscitent des engagements très variés des intervenants.
- Impact collectif
 - Premières années - restructuration
 - Années intermédiaires – développement de la collaboration et croissance des effets
 - Maturité – évaluation de l'impact ?



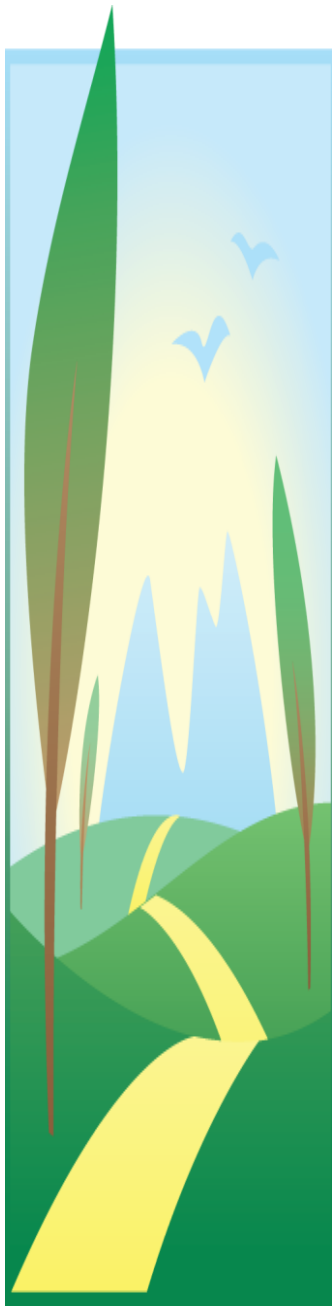


- *À notre avis, mettre en place un cadre de référence pancanadien pour mesurer l'efficacité des LIP et des RIF serait ... difficile voire même utopique et impossible dans le contexte actuel.*

Les différences entre les LIP et les RIF sont marquantes



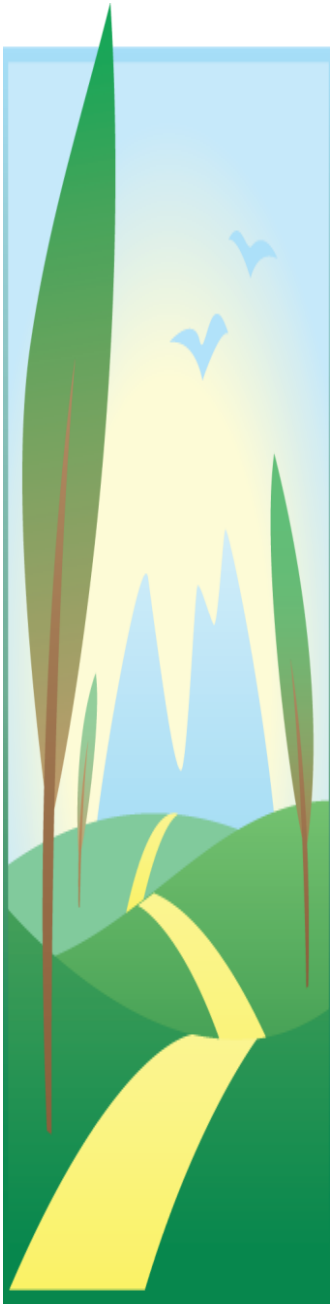
LIPs	RIFs
LIPs are based on place	RIFs are based on sense of belonging to an official language community
LIPs are linked to municipalities or groups of neighboring municipalities	RIFs cover whole provinces or territories (except Ontario)
In Central-South-Western Ontario there are 30 LIPs	In Central-South-Western Ontario there is one (1) RIF
In Northern Ontario, there are 5 LIPs	In Northern Ontario, there is one (1) RIF
In British Columbia, there are 19 LIPs	In British Colombia, the is one (1) RIF
LIPs seem to have a number (sufficient or insufficient?) of staff to perform the backbone function in Collective impact	RIFs have 1 2 or 3 staff members to perform the backbone function to cover their region, province or territory
LIPs have a mandate to create welcoming and inclusive communities to foster better integration of newcomers	RIFs have a mandate to create welcoming and inclusive communities to foster better integration of Francophone and Francophile newcomers into these communities
English is the language of work and communications for LIPs	French is the language of work and communications for RIFs
LIPs collaborate with well-established municipalities, community groups, government agencies, researchers and newcomers have access to most basic services for an English-speaking population	RIFs foster collaboration with evolving community groups mostly and often face an important lack of French-language services for a French-speaking immigrant population. Many RIF partners are underfunded community organizations.

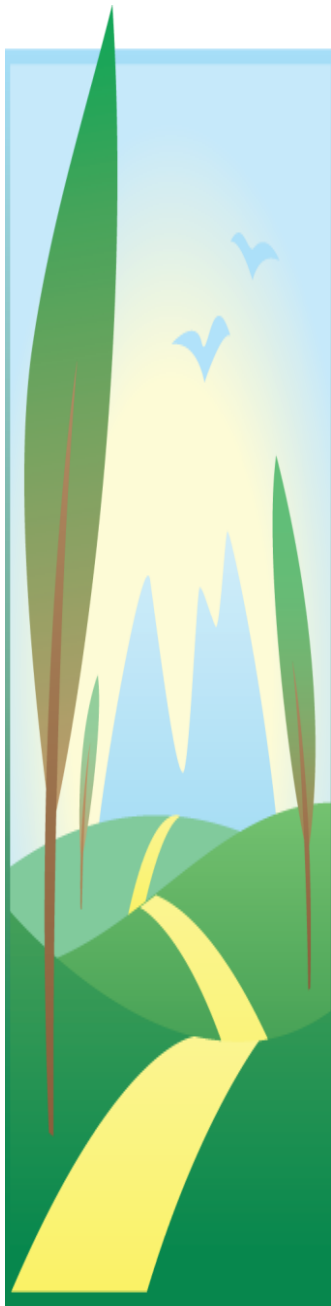


- *In our opinion, a Canada wide performance measurement framework for LIPs and RIFs would be... illusory, difficult and perhaps impossible.*

If not a national performance measurement framework, then what?

A collaboration and information sharing framework?

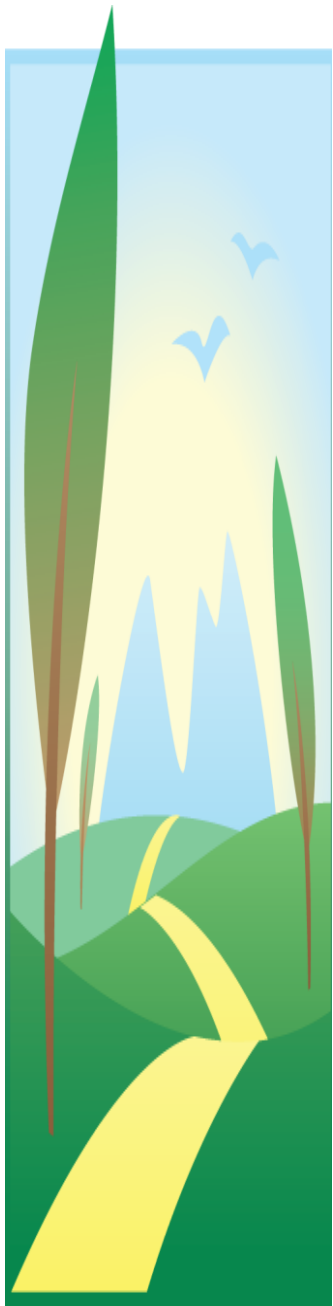




Convergence

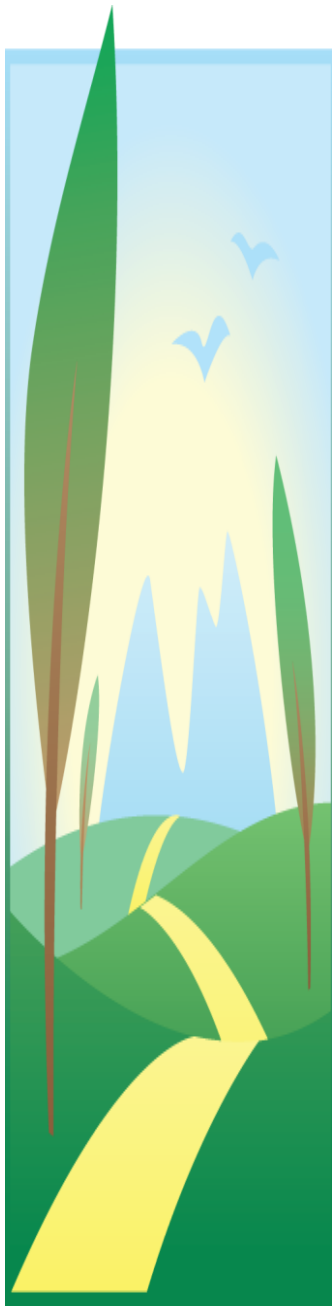
LIPs and RIFs have some common characteristics and challenges

LIPs	RIFs
LIPs are a new form of collaborative community governance	RIFs are a new form of collaborative community governance
LIPs are subject to a results-based accountability framework	RIFs are subject to a results-based accountability framework
LIPs succeed through a common vision and collective collaboration	RIFs succeed through a common vision and collective collaboration
LIPs strive for a collective impact on newcomers and on the community	RIFs strive for a collective impact on newcomers and on the community



Interdependence

- If RIFs reach their goals - the successful integration of Francophone and Francophile newcomers in the French-language community - they are contributing to the overall effort of Canadian society and of LIPs in particular

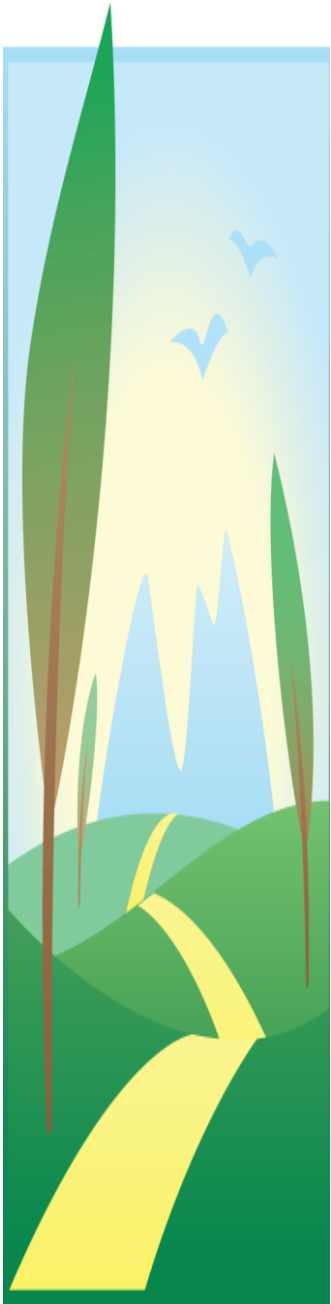


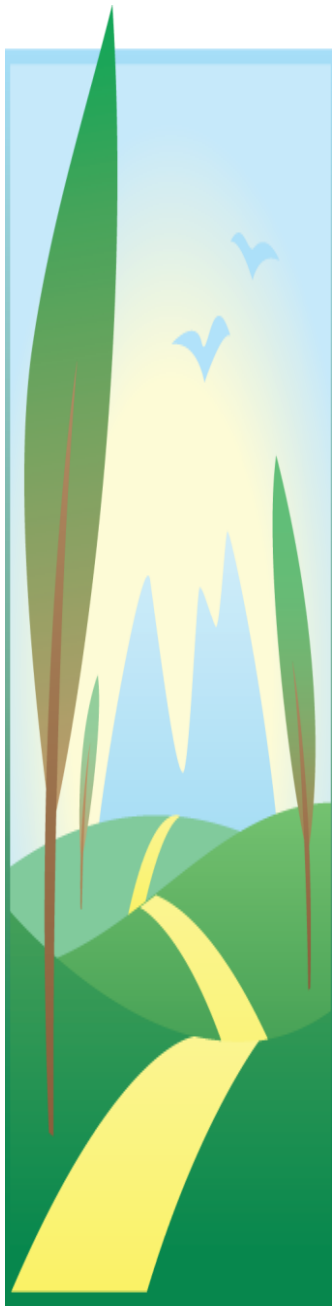
Interdependence

- To reach their overall goals and targets, LIPs need to promote linguistic duality and Francophone immigration and support efforts by the RIFs to create and strengthen welcoming and inclusive French-speaking communities throughout Canada.

Collaboration and information sharing

- To this end therefore some mechanisms need to be developed to facilitate the sharing of goals, results and outcomes between RIF s and LIPs and the monitoring of the effects and impact of each other's actions, successes and failures on both the newcomers and the community.



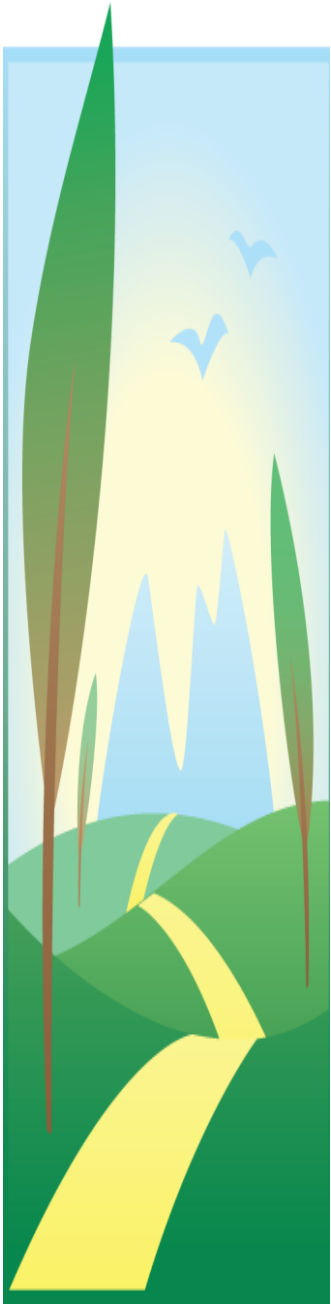


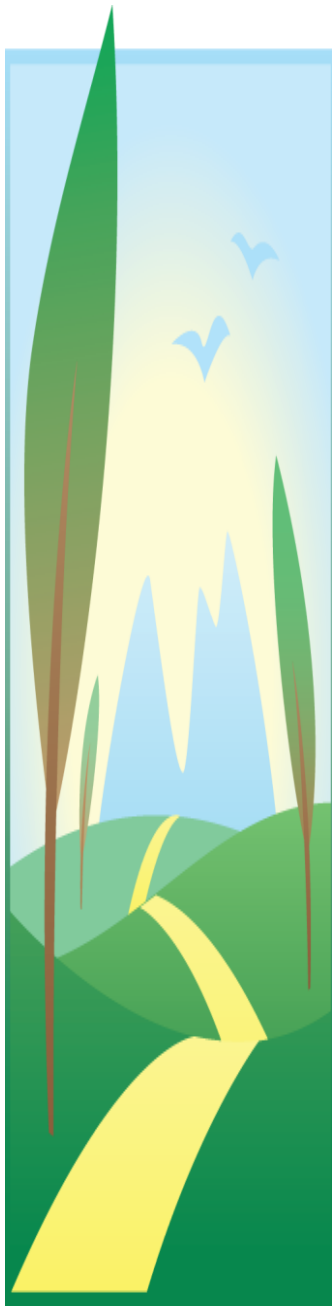
If there must be a Canada wide Framework

- LIPs and RIFs need to continue to focus on results for newcomers but they must also measure results for the community and in particular the linguistic minority community, for the provinces and territories, for Canada, including unexpected results. Key indicators will need to be developed and new generic data collection tools and strategies will need to be created.

If there must be a Canada wide Framework

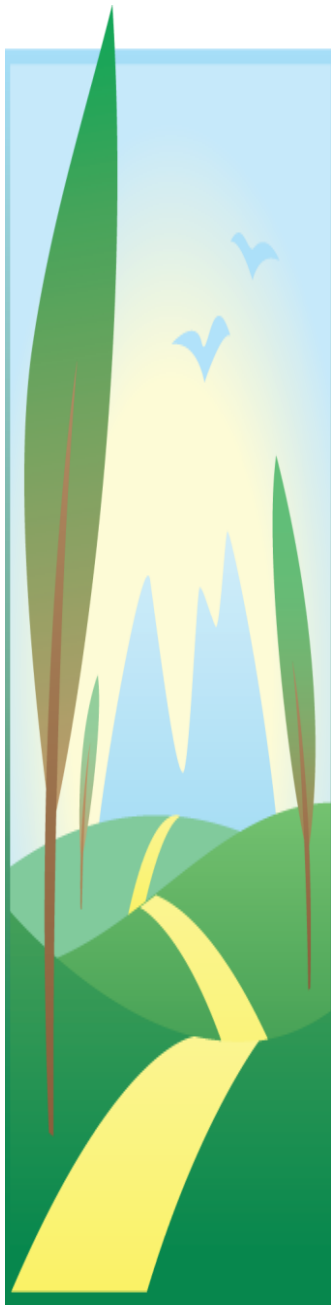
- In order to successfully develop shared measurements on immigration by RIFs and LIPs, both RIFs and LIPs must be involved from the very beginning in the reflection and planning phases. The development of new measures and sharing processes intended for LIPs and their eventual adaptation or imposition on RIFs will not work. RIFs do not possess the human and financial resources to embark on such an effort.





If there must be a Canada wide Framework

- How can collected data be used to evaluate progress, enhance learning and generate changes to a strategic plan or an action plan before the plan's *expiry* date?



Final note

- Despite the rhetoric, governments, agencies and even community groups are not necessarily used to working in a *New governance* collaborative approach or a *Collective impact* approach and will need time to develop trust and learn to share resources, power and leadership with their partners.

La coordination dans une gouvernance collaborative

