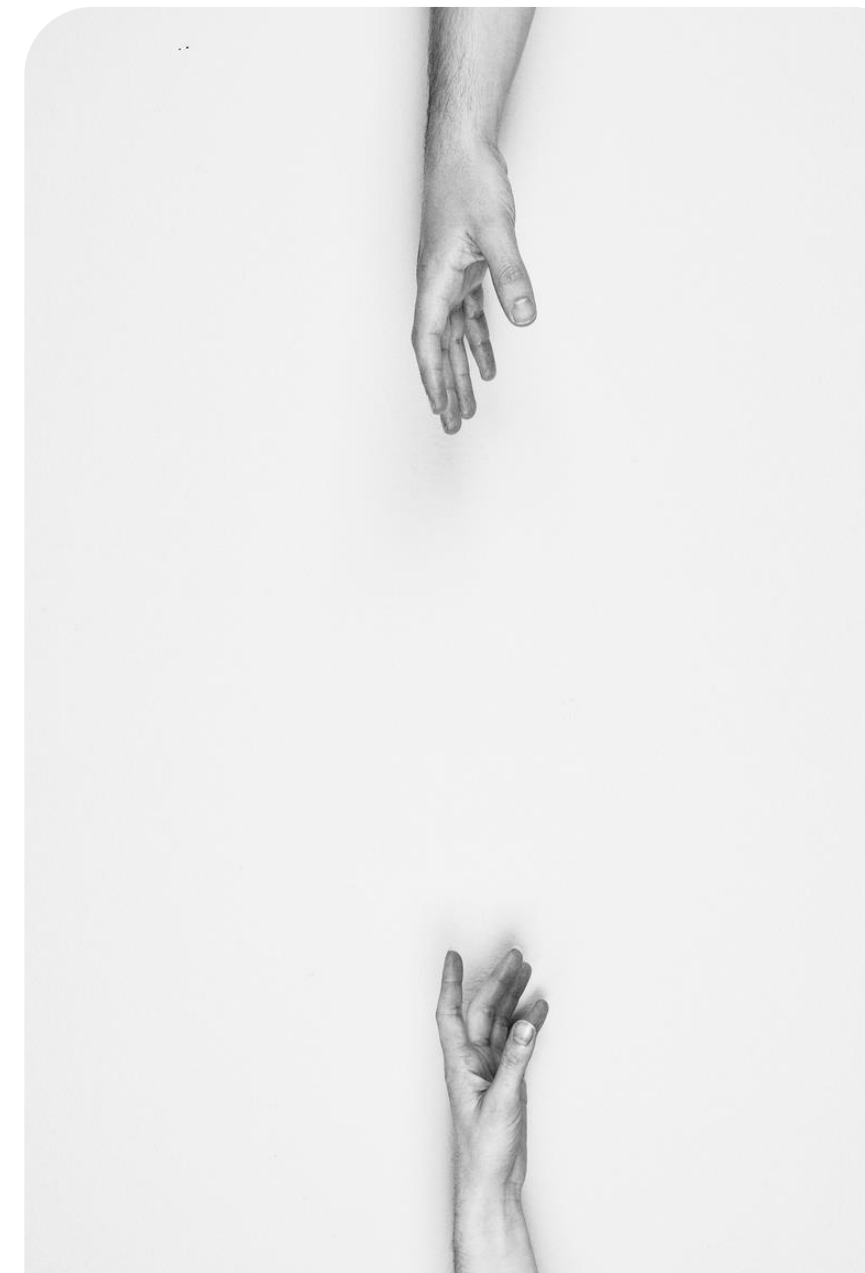
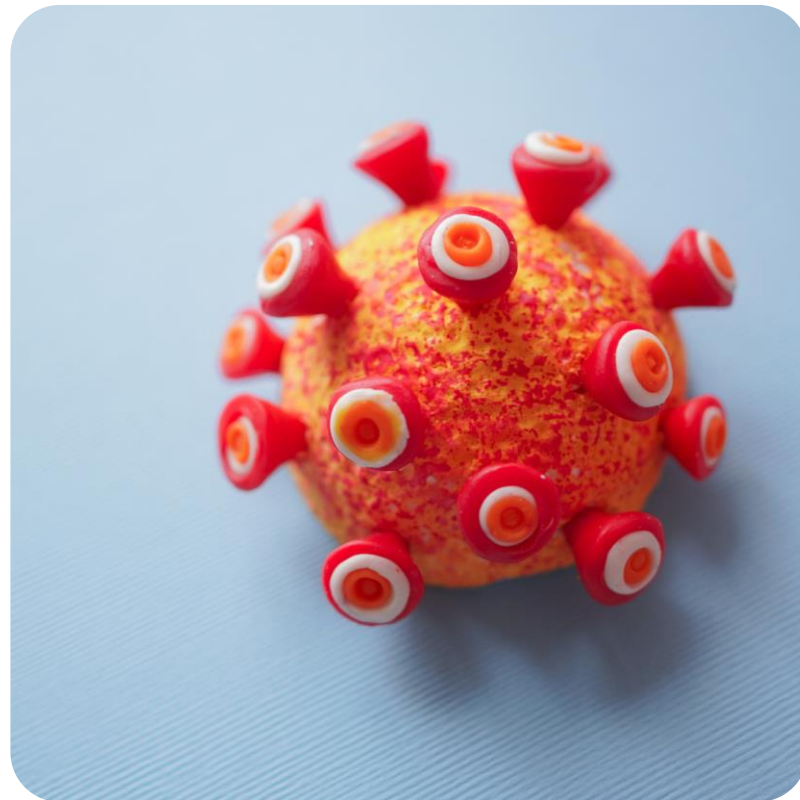


Impact of COVID on Marginalized Groups

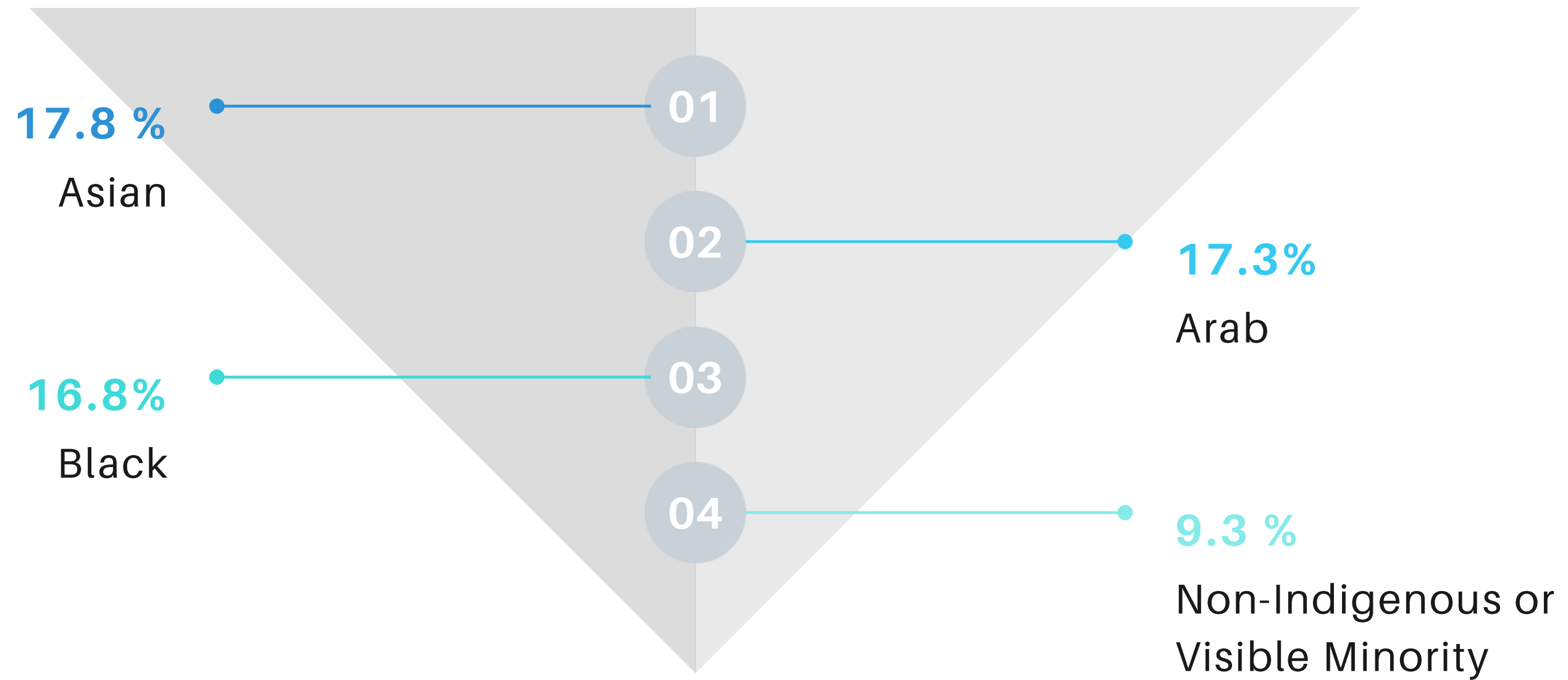
From Discourse to Action

2020

Images of a Pandemic



HIGHEST UNEMPLOYMENT RATES IN JULY



Women Concerned about Violence Occurring in their Home



1 IN 10

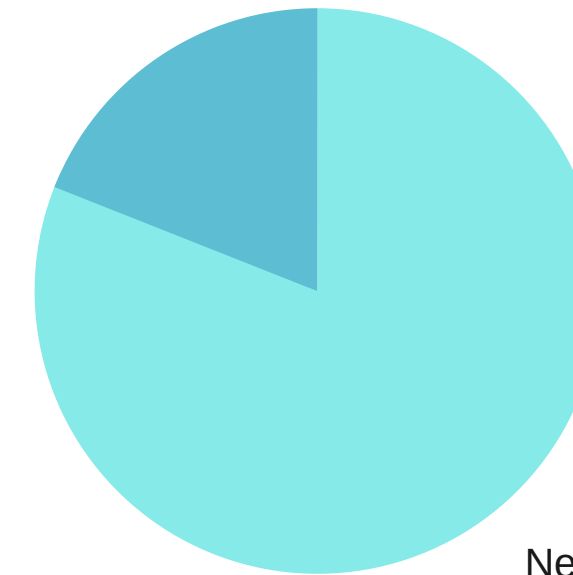
Canadians Reporting their Mental Health had worsened "a lot" as a result of COVID-19



1 IN 10

Canadians Reporting Negative Mental Health Changes

Positive / No Change
19%



81 %

Negative
81%

Impact on Vulnerable marginalized groups



- Disproportionate representation of workers
- Lack of decent work for low income workers
- Increased discrimination and overt racism acts
- Role conflict and heightened stress for women
- Mental Health concerns
- Gender based violence

Canadians experiencing the highest rate of violence



- Rural & Remote
- Indigenous
- Disabled
- Racialized
- Gender Non-conforming
- Migrants

COVID STATISTICS

PARTNERSHIP

- Community Based Organizations & Foundations
- National Organizations
- Businesses
- United Way

ENGAGEMENT

- Wellness Checks
- Crisis Lines
- Technology Distribution

DEVELOPMENT

- Educational Materials
- Tip Sheets
- GBV Seminars

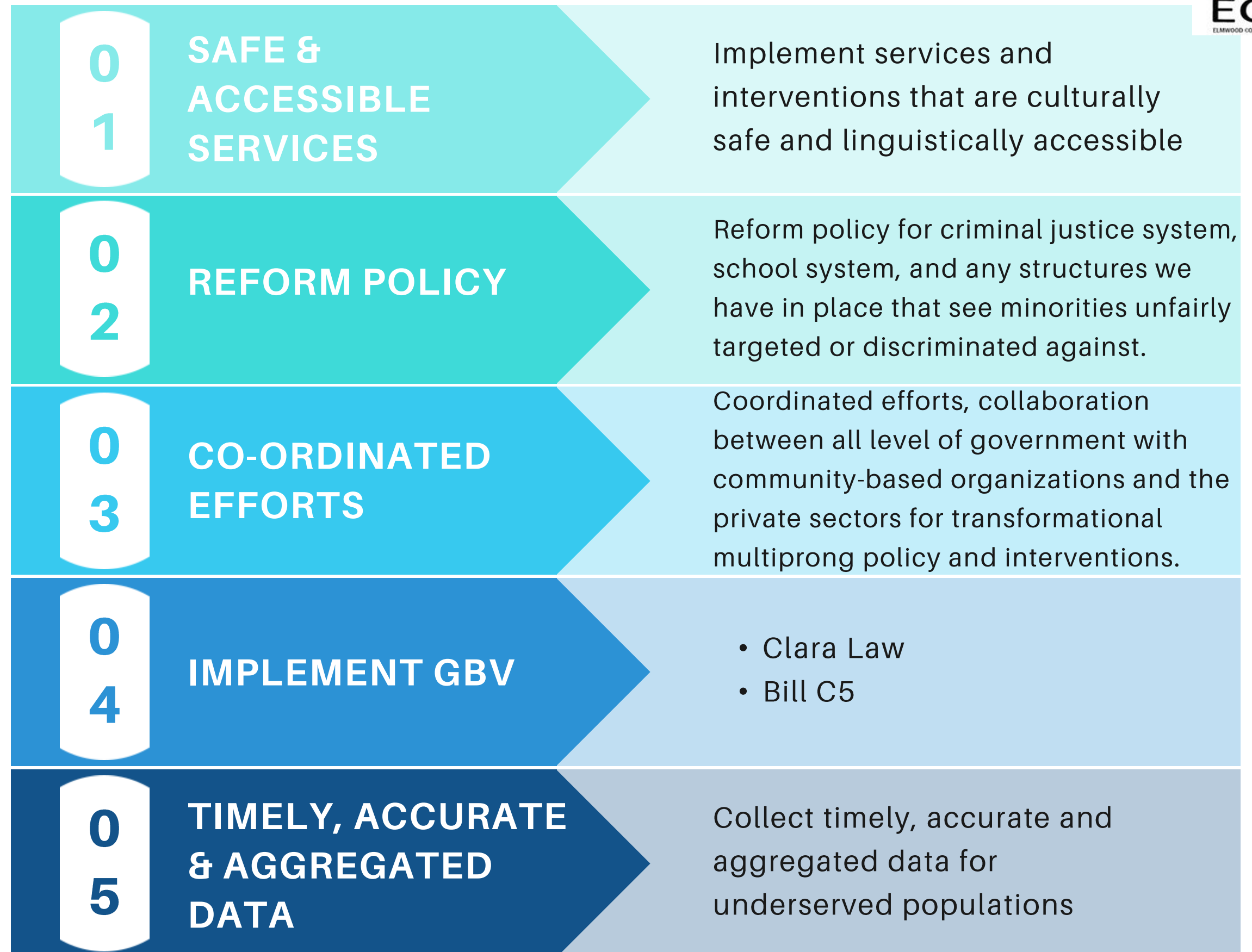
TRANSITION

- Zoom
- Emergency Kits

Our Response

Elmwood
Community
Resource Centre

Policy Response & Long Term Funding Options



The tenacity of the human spirit in our collective resolve for solidarity and survival has and will always overcome and outlast.

“