

Filling the gaps

Avoiding
duplication
since 2007

Q U I N T E
LOCAL IMMIGRATION
PARTNERSHIP

...a better community for everyone

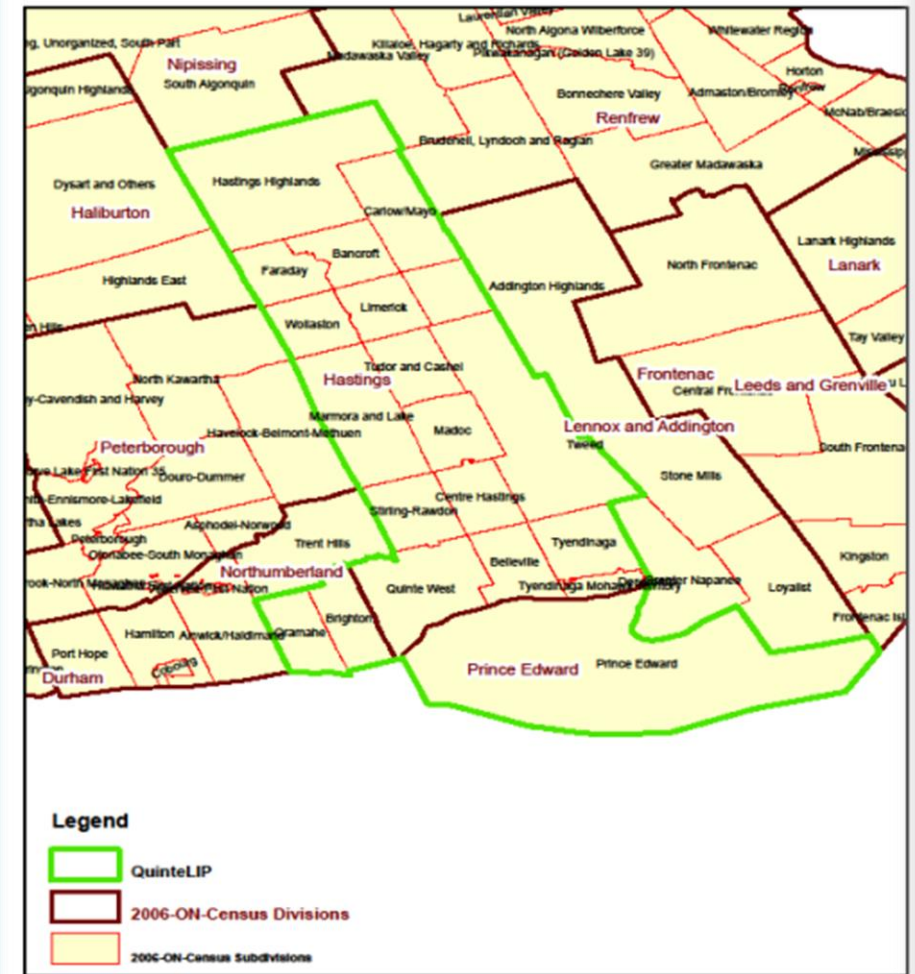
www.quintelip.ca

Networking in rural and urban settings covering a large demographic region in times of crisis

- ✓ Supporting the settlement needs of newcomers in rural, remote and urban areas that are under-resourced

A brief regional snapshot of the local community

- Vast catchment area
- One service provider, 4 counties
- 24 wards and municipalities
- Mix of rural and urban areas
- Quinte West and Belleville as a hub
- An average of 850 newcomers moving to the region every year.



Administering a local immigration partnership with focus on immigration

Advantages of administering an LIP through a settlement organization.

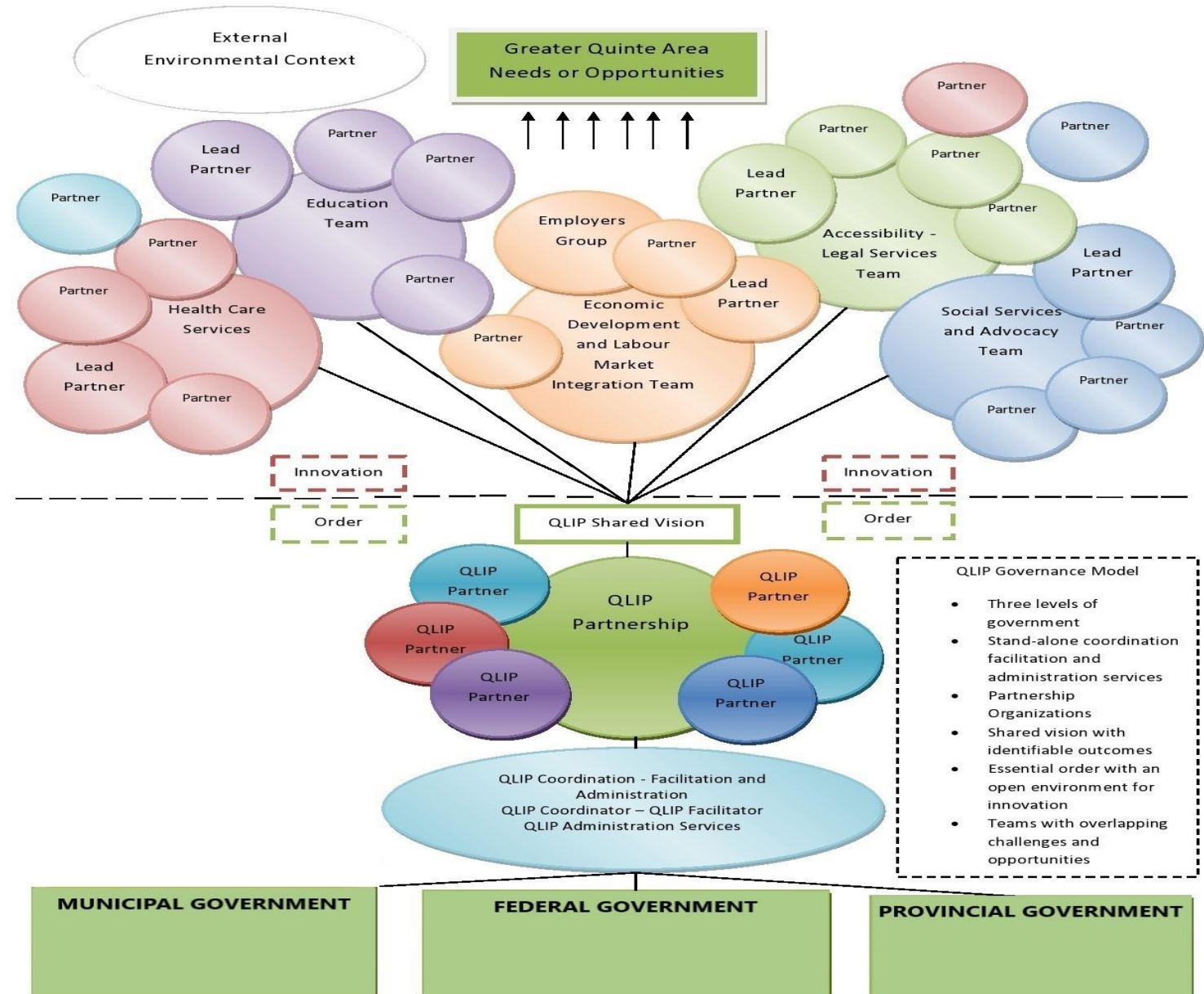
- Newcomers benefit from a more efficient and accurate information exchange between the LIP and agency
- Program boundaries are not rigid and communication more fluid
- Direct access to data obtained by settlement services and front line workers.
- Identifying gaps and promoting solutions

The Importance of networking when designing new programs

Local, regional and provincial
networks

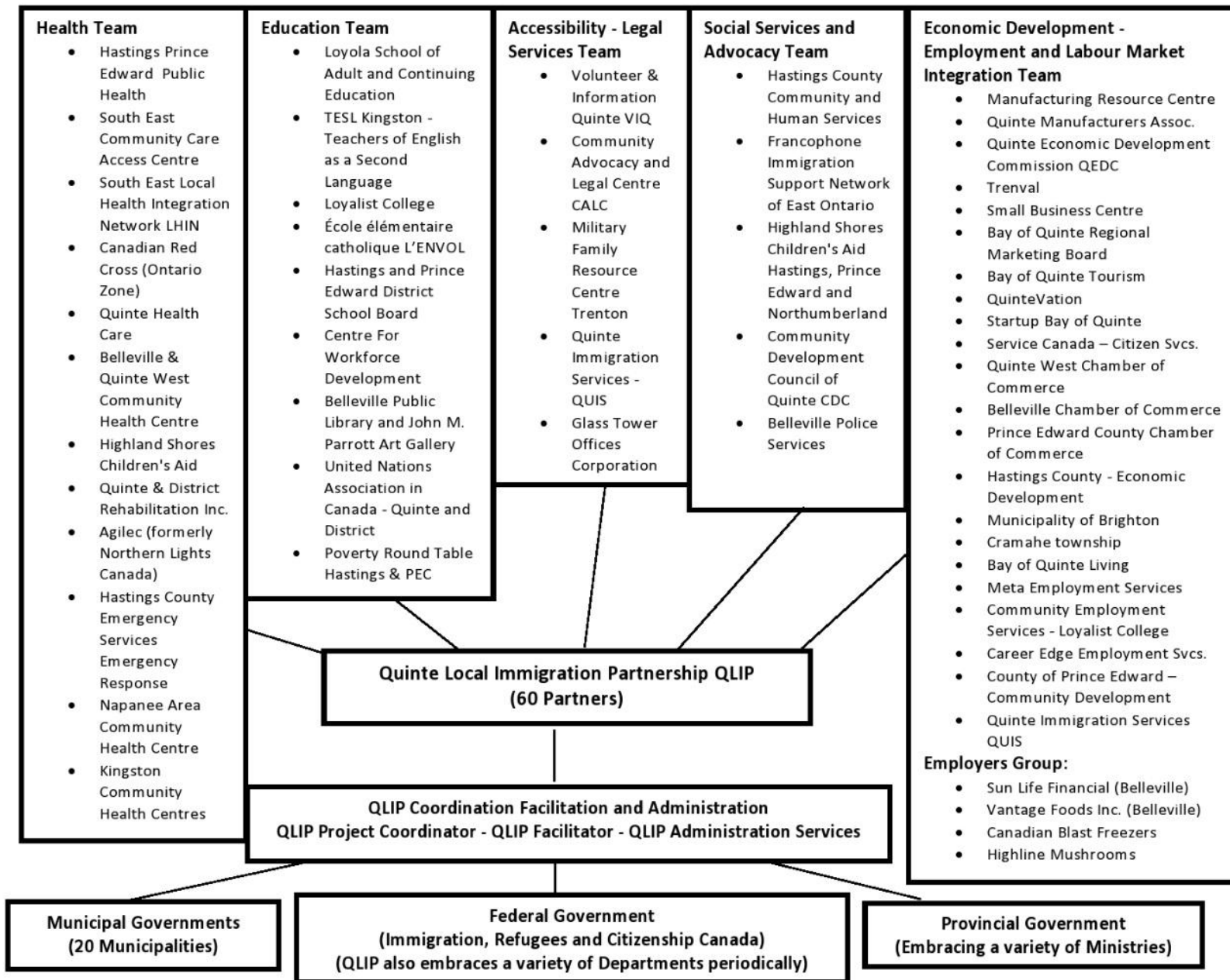
Quinte LIP
Currently 67
stakeholders

QLIP Partnership – Governance Model



Quinte LIP

Quinte Local Immigration Partnership QLIP - Organization Model and Working Groups (60 Partners)



The most common allies of every project

- Municipalities economic development offices
- Community development groups
- Service delivery stakeholders (delivering direct services to clients)
- Health services
- Legal services
- Community groups (churches, service club organizations)
- Local foundations (Parrot Foundation)
- Local, regional and national media, social media networks
- www.quintelip.ca several resources can be found on line

Crisis response team

- The Syrian refugee crisis response in the Quinte region
- August 2015 - Canada announced they would be taking Syrian refugees
- Alarming media reports of a mass exodus of Syrians from the conflict zone. Many perishing trying to escape.
- Community calls for mobilization
- September 2015 - initial meetings with staff, volunteers and communication with the board of directors to discuss the possible change in government policy regarding accepting increasing numbers of Syrian refugees to Canada.

Research Research Research

- Collection of information from all privately sponsoring groups in the region.
 - Number of families sponsored, number of family members, number of children, family and individual history background including skills and language proficiency, medical issues and other needs
- Strategy and planning for services delivery based on demographic distribution in the region, needs and general information based on collected data.
- Assessment of existing resources and needed resources in the region

A pilot project is born

- Research results provided a base for creation of programs including needs, challenges and existing resources
- When a challenge becomes an opportunity (labour shortages being met with available skills of a new labour force)
- Employer labour force needs are matched with the needs of refugees to become self-sustaining
- Agricultural work in Ontario a changing environment in need of a reboot.
- Farmers Feed the World - the pilot project that aimed to bring financial stability to refugee families in the long term.

Turning labour shortages into opportunities

with the help of employer collaborations (illustrated with Syrian refugee example)

Crisis Response team COVID 19

- Task force conveyed and lead by the Health Care Sector
- Newcomers providing essential services needed (including international students)
 - Programs such as Economic Development Through Immigration (EDTI) and Quinte STEP program ramped up to respond to employment needs
- Issues such as racism and discrimination magnified due to the isolation and unrest during the pandemic
- Collaboration with community and QLIP members on ongoing initiatives such as “Stand Together Against Racism” web forum, the Belleville Inclusion Committee and “Standing Together Against Gender-Based Violence”.
- Provide data and resources regarding immigrants in the community to health based agencies

Rural Immigration Summit

- A regional summit of stakeholders to jointly share current trends affecting newcomers in the Quinte Region.
- Discussions of current gaps, proposed solutions, sharing of resources
- Due to the pandemic, postponed to 2021

Conclusion

- Pandemic created a shockwave affecting all aspects of life and community
- QLIP benefited from longstanding relationship with stakeholders - able to provide informed response
- Strengthened by working within a settlement agency, facilitating a unified and coordinated response to times of crisis